

BEAN1 rabbit pAb

Catalog No :	YT6374
Reactivity :	Human;Mouse
Applications :	WB
Target :	BEAN1
Fields :	>>Spinocerebellar ataxia
Gene Name :	BEAN1
Protein Name :	BEAN1
Human Gene Id :	146227
Human Swiss Prot No :	Q3B7T3
Mouse Gene Id :	65115
Mouse Swiss Prot No :	Q9EQG5
Immunogen :	Synthesized peptide derived from human BEAN1 AA range: 146-196
Specificity :	This antibody detects endogenous levels of BEAN1 at Human/Mouse
Formulation :	Liquid in PBS containing 50% glycerol, 0.5% BSA and 0.02% sodium azide.
Source :	Polyclonal, Rabbit,IgG
Dilution :	wb 1:1000
Purification :	The antibody was affinity-purified from rabbit antiserum by affinity-chromatography using epitope-specific immunogen.
Concentration :	1 mg/ml

Storage Stability : -15°C to -25°C/1 year(Do not lower than -25°C)

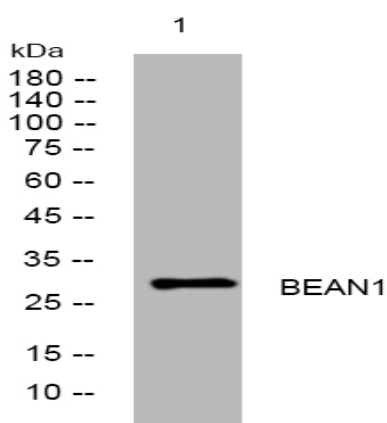
Molecularweight : 28kD

Background : The protein encoded by this gene is one of several proteins that interact with NEDD4, a member of a family of ubiquitin-protein ligases. These proteins have PY motifs in common that bind to the WW domains of NEDD4. NEDD4 is developmentally regulated, and is highly expressed in embryonic tissues. Mutations in this gene (i.e., intronic insertions of >100 copies of pentanucleotide repeats including a (TGGAA)_n sequence) are associated with spinocerebellar ataxia type 31. Alternatively spliced transcript variants encoding different isoforms have been found for this gene. [provided by RefSeq, May 2010],

Function : subunit:Interacts with NEDD4.,

Subcellular Location : Membrane ; Single-pass membrane protein .

Products Images



Western blot analysis of lysates from 3T3 cells, primary antibody was diluted at 1:1000, 4° over night