

## VCX1 rabbit pAb

<b>Catalog No :</b>	YT6373
<b>Reactivity :</b>	Human
<b>Applications :</b>	WB
<b>Target :</b>	VCX1
<b>Gene Name :</b>	VCX VCX1 VCX10R VCXB1
<b>Protein Name :</b>	VCX1
<b>Human Gene Id :</b>	26609
<b>Human Swiss Prot No :</b>	Q9H320
<b>Immunogen :</b>	Synthesized peptide derived from human VCX1 AA range: 95-145
<b>Specificity :</b>	This antibody detects endogenous levels of VCX1 at Human
<b>Formulation :</b>	Liquid in PBS containing 50% glycerol, 0.5% BSA and 0.02% sodium azide.
<b>Source :</b>	Polyclonal, Rabbit,IgG
<b>Dilution :</b>	WB 1:500-2000
<b>Purification :</b>	The antibody was affinity-purified from rabbit antiserum by affinity-chromatography using epitope-specific immunogen.
<b>Concentration :</b>	1 mg/ml
<b>Storage Stability :</b>	-15°C to -25°C/1 year(Do not lower than -25°C)
<b>Molecularweight :</b>	23kD
<b>Background :</b>	This gene belongs to the VCX/Y gene family, which has multiple members on both X and Y chromosomes, and all are expressed exclusively in male germ cells. The X-linked members are clustered on chromosome Xp22 and Y-linked

members are two identical copies of the gene within a palindromic region on Yq11. The family members share a high degree of sequence identity, with the exception that a 30-bp unit is tandemly repeated in X-linked members but occurs only once in Y-linked members. The VCX gene cluster is polymorphic in terms of copy number; different individuals may have a different number of VCX genes. VCX/Y genes encode small and highly charged proteins of unknown function. The presence of a putative bipartite nuclear localization signal suggests that VCX/Y members are nuclear proteins. This gene contains 10 repeats of the 30-bp unit. [provided by RefSeq, Jul 2008],

**Function :**

function:May mediate a process in spermatogenesis or may play a role in sex ratio distortion.,similarity:Belongs to the VCX/VCY family.,tissue specificity:Expressed exclusively in testis.,

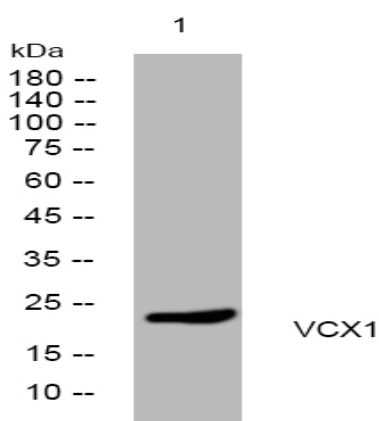
**Subcellular Location :**

nucleus,nucleolus,

**Expression :**

Expressed exclusively in testis.

## Products Images



Western blot analysis of lysates from HuvEc cells, primary antibody was diluted at 1:1000, 4° over night