

LCE1D rabbit pAb

Catalog No :	YT6370
Reactivity :	Human
Applications :	WB;ELISA;IHC
Target :	LCE1D
Gene Name :	LCE1D LEP4
Protein Name :	LCE1D
Human Gene Id :	353134
Human Swiss Prot No :	Q5T752
Immunogen :	Synthesized peptide derived from human LCE1D AA range: 56-106
Specificity :	This antibody detects endogenous levels of LCE1D at Human
Formulation :	Liquid in PBS containing 50% glycerol, 0.5% BSA and 0.02% sodium azide.
Source :	Polyclonal, Rabbit,IgG
Dilution :	WB 1:500-2000;IHC 1:50-300; ELISA 2000-20000
Purification :	The antibody was affinity-purified from rabbit antiserum by affinity-chromatography using epitope-specific immunogen.
Concentration :	1 mg/ml
Storage Stability :	-15 °C to -25 °C/1 year(Do not lower than -25 °C)
Molecularweight :	13kD
Function :	function:Precursors of the cornified envelope of the stratum corneum.,induction:By UVB.,miscellaneous:Belongs to the LCE cluster present on 1q21.,similarity:Belongs to the LCE family.,tissue specificity:Skin-specific.

Expression was readily detected in adult trunk skin, adult arm skin, fetal skin, penal skin, vulva, esophagus and tongue. Not expressed in the cervix, rectum, lung, colon, or placenta.,

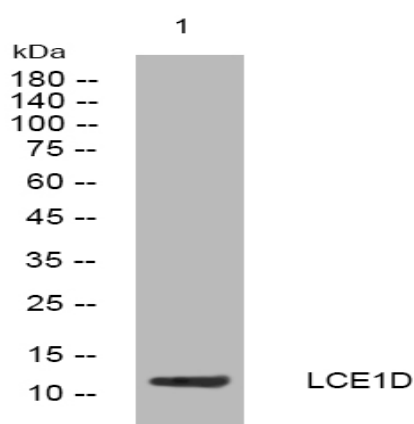
Subcellular Location :

cornified envelope,cytoplasm,perinuclear region of cytoplasm,

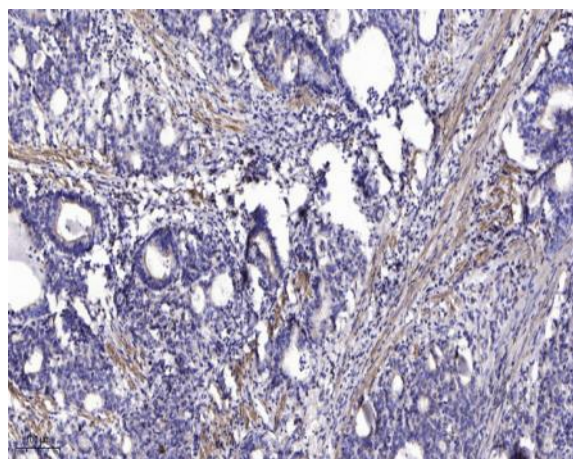
Expression :

Skin-specific. Expression was readily detected in adult trunk skin, adult arm skin, fetal skin, penal skin, vulva, esophagus and tongue. Not expressed in the cervix, rectum, lung, colon, or placenta.

Products Images



Western blot analysis of lysates from HpeG2 cells, primary antibody was diluted at 1:1000, 4° over night



Immunohistochemical analysis of paraffin-embedded human Gastric adenocarcinoma. 1, Antibody was diluted at 1:200(4° overnight). 2, Tris-EDTA,pH9.0 was used for antigen retrieval. 3,Secondary antibody was diluted at 1:200(room temperature, 45min).