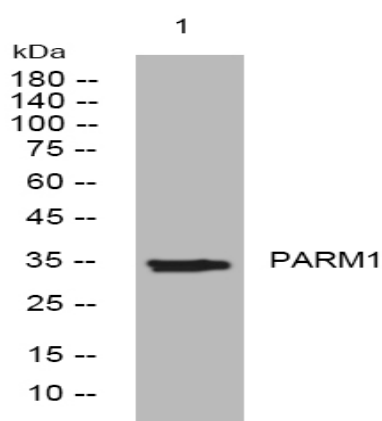


PARM1 rabbit pAb

Catalog No :	YT6365
Reactivity :	Human;Mouse;Rat
Applications :	WB
Target :	PARM1
Gene Name :	PARM1 UNQ1879/PRO4322
Protein Name :	PARM1
Human Gene Id :	25849
Human Swiss Prot No :	Q6UWI2
Mouse Gene Id :	231440
Mouse Swiss Prot No :	Q923D3
Rat Gene Id :	286894
Rat Swiss Prot No :	Q6P9X9
Immunogen :	Synthesized peptide derived from human PARM1 AA range: 147-197
Specificity :	This antibody detects endogenous levels of PARM1 at Human/Mouse/Rat
Formulation :	Liquid in PBS containing 50% glycerol, 0.5% BSA and 0.02% sodium azide.
Source :	Polyclonal, Rabbit,IgG
Dilution :	WB 1:500-2000
Purification :	The antibody was affinity-purified from rabbit antiserum by affinity-chromatography using epitope-specific immunogen.

Concentration :	<u>1 mg/ml</u>
Storage Stability :	<u>-15°C to -25°C/1 year(Do not lower than -25°C)</u>
Molecularweight :	<u>34kD</u>
Function :	<u>function:May be involved in a survival program enabling certain prostatic cells to resist apoptosis.,</u>
Subcellular Location :	<u>Cell membrane ; Single-pass type I membrane protein . Golgi apparatus membrane ; Single-pass type I membrane protein . Endosome membrane ; Single-pass type I membrane protein .</u>
Expression :	<u>Widely expressed with highest levels in heart, kidney and placenta.</u>

Products Images



Western blot analysis of lysates from K562 cells, primary antibody was diluted at 1:1000, 4° over night