

SHOX2 rabbit pAb

Catalog No :	YT6364
Reactivity :	Human;Mouse;Rat
Applications :	WB;IHC;FCM
Target :	SHOX2
Gene Name :	SHOX2 OG12X SHOT
Protein Name :	SHOX2
Human Gene Id :	6474
Human Swiss Prot No :	O60902
Mouse Gene Id :	20429
Mouse Swiss Prot No :	P70390
Rat Gene Id :	25546
Rat Swiss Prot No :	O35750
Immunogen :	Synthesized peptide derived from human SHOX2 AA range: 37-87
Specificity :	This antibody detects endogenous levels of SHOX2 at Human/Mouse/Rat
Formulation :	Liquid in PBS containing 50% glycerol, 0.5% BSA and 0.02% sodium azide.
Source :	Polyclonal, Rabbit,IgG
Dilution :	WB 1:500-2000;IHC 1:50-300,FCM 1:100-200
Purification :	The antibody was affinity-purified from rabbit antiserum by affinity-chromatography using epitope-specific immunogen.

Concentration : 1 mg/ml

Storage Stability : -15°C to -25°C/1 year(Do not lower than -25°C)

Molecularweight : 36kD

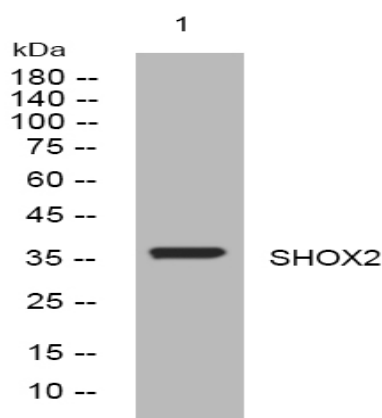
Background : This gene is a member of the homeobox family of genes that encode proteins containing a 60-amino acid residue motif that represents a DNA binding domain. Homeobox genes have been characterized extensively as transcriptional regulators involved in pattern formation in both invertebrate and vertebrate species. Several human genetic disorders are caused by aberrations in human homeobox genes. This locus represents a pseudoautosomal homeobox gene that is thought to be responsible for idiopathic short stature, and it is implicated in the short stature phenotype of Turner syndrome patients. This gene is considered to be a candidate gene for Cornelia de Lange syndrome. Alternative splicing results in multiple transcript variants. [provided by RefSeq, Jul 2009],

Function : developmental stage:Expressed during cranofacial development as well as in heart.,function:May be a growth regulator and have a role in specifying neural systems involved in processing somatosensory information, as well as in face and body structure formation.,similarity:Belongs to the paired homeobox family. Bicoid subfamily.,similarity:Contains 1 homeobox DNA-binding domain.,similarity:Contains 1 OAR domain.,tissue specificity:Expressed in heart, skeletal muscle, liver, lung, bone marrow fibroblast, pancreas and placenta.,

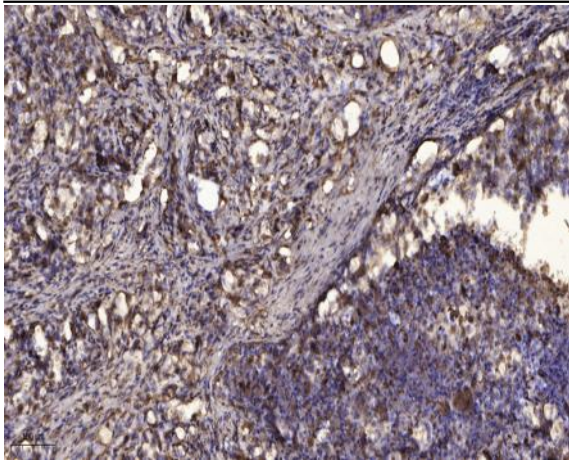
Subcellular Location : Nucleus.

Expression : Expressed in heart, skeletal muscle, liver, lung, bone marrow fibroblast, pancreas and placenta.

Products Images



Western blot analysis of lysates from HeLa cells, primary antibody was diluted at 1:1000, 4° over night



Immunohistochemical analysis of paraffin-embedded human Squamous cell carcinoma of lung. 1, Antibody was diluted at 1:200(4° overnight). 2, Tris-EDTA,pH9.0 was used for antigen retrieval. 3,Secondary antibody was diluted at 1:200(room temperature, 45min).