

NIPA4 rabbit pAb

Catalog No :	YT6340
Reactivity :	Human;Mouse
Applications :	WB
Target :	NIPA4
Gene Name :	NIPAL4 ICHN NIPA4
Protein Name :	NIPA4
Human Gene Id :	348938
Human Swiss Prot No :	Q0D2K0
Mouse Gene Id :	214112
Mouse Swiss Prot No :	Q8BZF2
Immunogen :	Synthesized peptide derived from human NIPA4 AA range: 82-132
Specificity :	This antibody detects endogenous levels of NIPA4 at Human/Mouse
Formulation :	Liquid in PBS containing 50% glycerol, 0.5% BSA and 0.02% sodium azide.
Source :	Polyclonal, Rabbit,IgG
Dilution :	WB 1[?]500-2000
Purification :	The antibody was affinity-purified from rabbit antiserum by affinity-chromatography using epitope-specific immunogen.
Concentration :	1 mg/ml
Storage Stability :	-15°C to -25°C/1 year(Do not lower than -25°C)

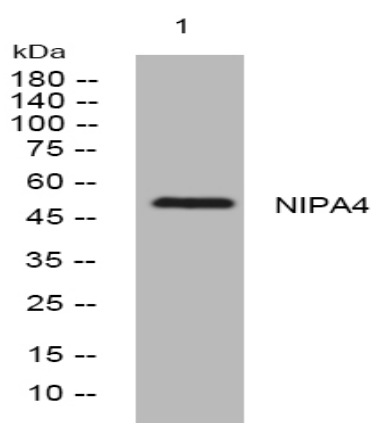
Molecularweight : 51kD

Background : This gene likely encodes a membrane receptor. Mutations in this gene have been associated with autosomal recessive congenital ichthyosis. [provided by RefSeq, Feb 2010],

Subcellular Location : Membrane ; Multi-pass membrane protein .

Expression : Highly expressed in brain, lung, stomach, keratinocytes and leukocytes, and in all other tissues tested except liver, thyroid and fetal brain.

Products Images



Western blot analysis of lysates from 293T cells, primary antibody was diluted at 1:1000, 4 ° over night