

CASZ1 rabbit pAb

Catalog No :	YT6336
Reactivity :	Human;Mouse
Applications :	WB
Target :	CASZ1
Gene Name :	CASZ1 CST SRG ZNF693
Protein Name :	CASZ1
Human Gene Id :	54897
Human Swiss Prot No :	Q86V15
Mouse Gene Id :	69743
Mouse Swiss Prot No :	Q9CWL2
Immunogen :	Synthesized peptide derived from human CASZ1 AA range: 1413-1463
Specificity :	This antibody detects endogenous levels of CASZ1 at Human/Mouse
Formulation :	Liquid in PBS containing 50% glycerol, 0.5% BSA and 0.02% sodium azide.
Source :	Polyclonal, Rabbit,IgG
Dilution :	WB 1:500-2000
Purification :	The antibody was affinity-purified from rabbit antiserum by affinity-chromatography using epitope-specific immunogen.
Concentration :	1 mg/ml
Storage Stability :	-15°C to -25°C/1 year(Do not lower than -25°C)

Molecularweight : 193kD

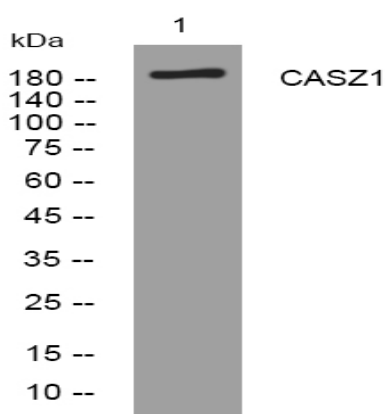
Background : The protein encoded by this gene is a zinc finger transcription factor. The encoded protein may function as a tumor suppressor, and single nucleotide polymorphisms in this gene are associated with blood pressure variation. Alternative splicing results in multiple transcript variants that encode different protein isoforms. [provided by RefSeq, Jul 2012],

Function : function:Probable transcription factor.,similarity:Contains 8 C2H2-type zinc fingers.,tissue specificity:Expressed in heart, lung, skeletal muscle, pancreas, testis, small intestine, and stomach, but it is not detectable in the adult brain.,

Subcellular Location : Nucleus .

Expression : Expressed in heart, lung, skeletal muscle, pancreas, testis, small intestine, and stomach, but it is not detectable in the adult brain.

Products Images



Western blot analysis of lysates from 293T cells, primary antibody was diluted at 1:1000, 4° over night