

## SMPX rabbit pAb

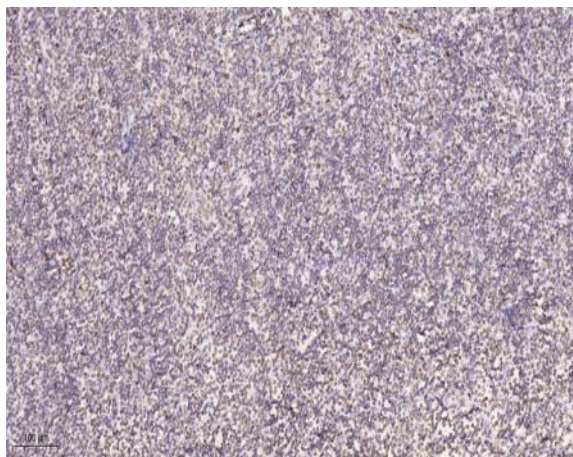
<b>Catalog No :</b>	YT6335
<b>Reactivity :</b>	Human;Mouse;Rat
<b>Applications :</b>	IHC;IF
<b>Target :</b>	SMPX
<b>Gene Name :</b>	SMPX SRMX
<b>Protein Name :</b>	SMPX
<b>Human Gene Id :</b>	23676
<b>Human Swiss Prot No :</b>	Q9UHP9
<b>Mouse Gene Id :</b>	66106
<b>Mouse Swiss Prot No :</b>	Q9DC77
<b>Rat Gene Id :</b>	84416
<b>Rat Swiss Prot No :</b>	Q925F0
<b>Immunogen :</b>	Synthesized peptide derived from human SMPX AA range: 21-71
<b>Specificity :</b>	This antibody detects endogenous levels of SMPX at Human/Mouse/Rat
<b>Formulation :</b>	Liquid in PBS containing 50% glycerol, 0.5% BSA and 0.02% sodium azide.
<b>Source :</b>	Polyclonal, Rabbit,IgG
<b>Dilution :</b>	IHC 1:50-200. IF 1:50-200
<b>Purification :</b>	The antibody was affinity-purified from rabbit antiserum by affinity-chromatography using epitope-specific immunogen.

---

<b>Concentration :</b>	1 mg/ml
<b>Storage Stability :</b>	-15°C to -25°C/1 year(Do not lower than -25°C)
<b>Molecularweight :</b>	10kD
<b>Background :</b>	This gene encodes a small protein that has no known functional domains. Mutations in this gene are a cause of X-linked deafness-4, and the encoded protein may play a role in the maintenance of inner ear cells subjected to mechanical stress. Alternatively spliced transcript variants have been observed for this gene. [provided by RefSeq, Dec 2011],
<b>Function :</b>	caution:It is uncertain whether Met-1 or Met-3 is the initiator.,function:Plays a role in the regulatory network through which muscle cells coordinate their structural and functional states during growth, adaptation, and repair.,similarity:Belongs to the SMPX family.,tissue specificity:Preferentially and abundantly expressed in heart and skeletal muscle.,
<b>Subcellular Location :</b>	nucleus,muscle tendon junction,integral component of membrane,M band,costamere,
<b>Expression :</b>	Preferentially and abundantly expressed in heart and skeletal muscle.

---

## Products Images



Immunohistochemical analysis of paraffin-embedded human tonsil. 1, Tris-EDTA,pH9.0 was used for antigen retrieval. 2 Antibody was diluted at 1:200(4° overnight.3,Secondary antibody was diluted at 1:200(room temperature, 45min).