

FBX46 rabbit pAb

Catalog No :	YT6334
Reactivity :	Human;Mouse;Rat
Applications :	WB
Target :	FBX46
Gene Name :	FBXO46 FBX46 FBXO34L
Protein Name :	FBX46
Human Gene Id :	23403
Human Swiss Prot No :	Q6PJ61
Mouse Gene Id :	243867
Mouse Swiss Prot No :	Q8BG80
Rat Gene Id :	292686
Rat Swiss Prot No :	Q4KLY2
Immunogen :	Synthesized peptide derived from human FBX46 AA range: 67-117
Specificity :	This antibody detects endogenous levels of FBX46 at Human/Mouse/Rat
Formulation :	Liquid in PBS containing 50% glycerol, 0.5% BSA and 0.02% sodium azide.
Source :	Polyclonal, Rabbit,IgG
Dilution :	WB 1:500-2000
Purification :	The antibody was affinity-purified from rabbit antiserum by affinity-chromatography using epitope-specific immunogen.

Concentration : 1 mg/ml

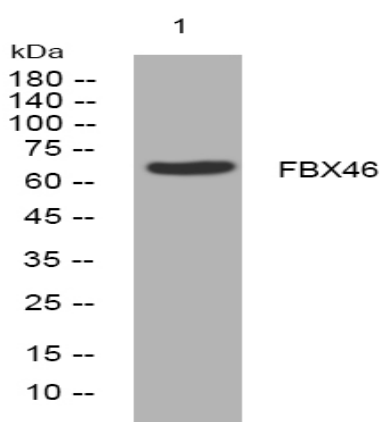
Storage Stability : -15°C to -25°C/1 year(Do not lower than -25°C)

Molecularweight : 66kD

Background : Members of the F-box protein family, such as FBXO46, are characterized by an approximately 40-amino acid F-box motif. SCF complexes, formed by SKP1 (MIM 601434), cullin (see CUL1; MIM 603134), and F-box proteins, act as protein-ubiquitin ligases. F-box proteins interact with SKP1 through the F box, and they interact with ubiquitination targets through other protein interaction domains (Jin et al., 2004 [PubMed 15520277]).[supplied by OMIM, Mar 2008],

Function : caution:The region from 1 to 163 was deduced from the genomic sequence and ESTs by similarity to the mouse sequence.,function:Substrate-recognition component of the SCF (SKP1-CUL1-F-box protein)-type E3 ubiquitin ligase complex.,similarity:Contains 1 F-box domain.,subunit:Interacts with SKP1A and CUL1.,

Products Images



Western blot analysis of lysates from 293T cells, primary antibody was diluted at 1:1000, 4° over night