

F207A rabbit pAb

| | |
|------------------------------|---|
| Catalog No : | YT6331 |
| Reactivity : | Human;Mouse |
| Applications : | WB |
| Target : | F207A |
| Gene Name : | FAM207A C21orf70 PRED56 |
| Protein Name : | F207A |
| Human Gene Id : | 85395 |
| Human Swiss Prot No : | Q9NSI2 |
| Mouse Gene Id : | 108707 |
| Mouse Swiss Prot No : | P58468 |
| Immunogen : | Synthesized peptide derived from human F207A AA range: 29-79 |
| Specificity : | This antibody detects endogenous levels of F207A at Human/Mouse |
| Formulation : | Liquid in PBS containing 50% glycerol, 0.5% BSA and 0.02% sodium azide. |
| Source : | Polyclonal, Rabbit,IgG |
| Dilution : | WB 1:500-2000 |
| Purification : | The antibody was affinity-purified from rabbit antiserum by affinity-chromatography using epitope-specific immunogen. |
| Concentration : | 1 mg/ml |
| Storage Stability : | -15°C to -25°C/1 year(Do not lower than -25°C) |

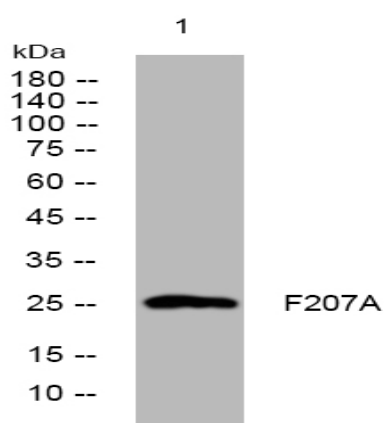
Molecularweight : 25kD

Function : tissue specificity:Not detected in any tested tissue.,

Subcellular Location : Nucleus, nucleolus .

Expression : Not detected in any tested tissue.

Products Images



Western blot analysis of lysates from U2OS cells, primary antibody was diluted at 1:1000, 4° over night