

LUZP1 rabbit pAb

| | |
|------------------------------|---|
| Catalog No : | YT6330 |
| Reactivity : | Human;Mouse;Rat |
| Applications : | WB |
| Target : | LUZP1 |
| Gene Name : | LUZP1 |
| Protein Name : | LUZP1 |
| Human Gene Id : | 7798 |
| Human Swiss Prot No : | Q86V48 |
| Mouse Gene Id : | 269593 |
| Mouse Swiss Prot No : | Q8R4U7 |
| Rat Swiss Prot No : | Q9ESV1 |
| Immunogen : | Synthesized peptide derived from human LUZP1 AA range: 555-605 |
| Specificity : | This antibody detects endogenous levels of LUZP1 at Human/Mouse/Rat |
| Formulation : | Liquid in PBS containing 50% glycerol, 0.5% BSA and 0.02% sodium azide. |
| Source : | Polyclonal, Rabbit,IgG |
| Dilution : | WB 1[?]500-2000 |
| Purification : | The antibody was affinity-purified from rabbit antiserum by affinity-chromatography using epitope-specific immunogen. |
| Concentration : | 1 mg/ml |

Storage Stability : -15°C to -25°C/1 year(Do not lower than -25°C)

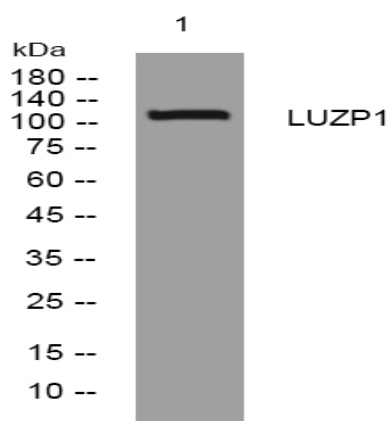
Molecularweight : 118kD

Background : This gene encodes a protein that contains a leucine zipper motif. The exact function of the encoded protein is not known. In mice this gene affects neural tube closure. Alternative splicing results in multiple transcript variants. [provided by RefSeq, Dec 2008],

Function : subcellular location:Also detected in soma and dendrites of neurons.,

Subcellular Location : Nucleus. Also detected in soma and dendrites of neurons. .

Products Images



Western blot analysis of lysates from U2OS cells, primary antibody was diluted at 1:1000, 4° over night