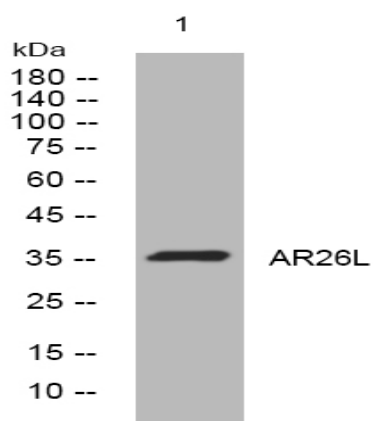


AR26L rabbit pAb

Catalog No :	YT6318
Reactivity :	Human
Applications :	WB
Target :	AR26L
Gene Name :	ANKRD26P1
Protein Name :	AR26L
Human Swiss Prot No :	Q6NSI1
Immunogen :	Synthesized peptide derived from human AR26L AA range: 268-318
Specificity :	This antibody detects endogenous levels of AR26L at Human
Formulation :	Liquid in PBS containing 50% glycerol, 0.5% BSA and 0.02% sodium azide.
Source :	Polyclonal, Rabbit,IgG
Dilution :	WB 1:500-2000
Purification :	The antibody was affinity-purified from rabbit antiserum by affinity-chromatography using epitope-specific immunogen.
Concentration :	1 mg/ml
Storage Stability :	-15°C to -25°C/1 year(Do not lower than -25°C)
Molecularweight :	35kD
Function :	similarity:Contains 5 ANK repeats.,

Products Images



Western blot analysis of lysates from SH-SY5Y cells, primary antibody was diluted at 1:1000, 4° over night