

BRD1 rabbit pAb

Catalog No :	YT6310
Reactivity :	Human;Mouse
Applications :	WB
Target :	BRD1
Gene Name :	BRD1 BRL BRPF2
Protein Name :	BRD1
Human Gene Id :	23774
Human Swiss Prot No :	O95696
Immunogen :	Synthesized peptide derived from human BRD1 AA range: 399-449
Specificity :	This antibody detects endogenous levels of BRD1 at Human
Formulation :	Liquid in PBS containing 50% glycerol, 0.5% BSA and 0.02% sodium azide.
Source :	Polyclonal, Rabbit,IgG
Dilution :	WB 1[?]500-2000
Purification :	The antibody was affinity-purified from rabbit antiserum by affinity-chromatography using epitope-specific immunogen.
Concentration :	1 mg/ml
Storage Stability :	-15°C to -25°C/1 year(Do not lower than -25°C)
Molecularweight :	116kD
Background :	This gene encodes a bromodomain-containing protein that localizes to the nucleus and can interact with DNA and histone tails. The encoded protein is a component of the MOZ/MORF acetyltransferase complex and can stimulate

acetylation of histones H3 and H4, thereby potentially playing a role in gene activation. Variation in this gene is associated with schizophrenia and bipolar disorder in some study populations. Alternative splicing results in multiple transcript variants. [provided by RefSeq, Feb 2015],

Function :

function:Component of the MOZ/MORF complex which has a histone H3 acetyltransferase activity.,similarity:Contains 1 bromo domain.,similarity:Contains 1 PHD-type zinc finger.,similarity:Contains 1 PWWP domain.,subunit:Component of the MOZ/MORF composed at least of ING5, MYST3/MOZ, MYST4/MORF and one of BRPF1, BRD1/BRPF2 and BRPF3.,tissue specificity:Highly expressed in testis.,

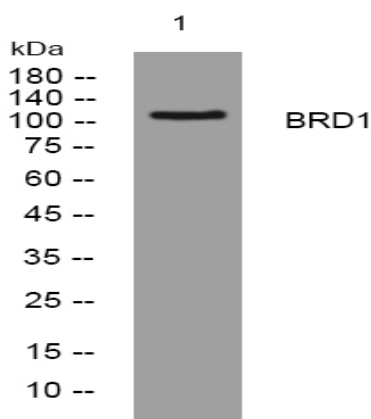
Subcellular Location :

Nucleus . Chromosome . Localizes to transcription start sites .

Expression :

Highly expressed in testis.

Products Images



Western blot analysis of lysates from CACO2 cells, primary antibody was diluted at 1:1000, 4° over night