

STRUM rabbit pAb

Catalog No :	YT6309
Reactivity :	Human;Mouse
Applications :	WB;IHC
Target :	STRUM
Fields :	>>Endocytosis
Gene Name :	KIAA0196
Protein Name :	STRUM
Human Gene Id :	9897
Human Swiss Prot No :	Q12768
Mouse Gene Id :	223593
Mouse Swiss Prot No :	Q8C2E7
Immunogen :	Synthesized peptide derived from human STRUM AA range: 515-565
Specificity :	This antibody detects endogenous levels of STRUM at Human/Mouse
Formulation :	Liquid in PBS containing 50% glycerol, 0.5% BSA and 0.02% sodium azide.
Source :	Polyclonal, Rabbit,IgG
Dilution :	WB 1:500-2000;IHC 1:50-300
Purification :	The antibody was affinity-purified from rabbit antiserum by affinity-chromatography using epitope-specific immunogen.
Concentration :	1 mg/ml

Storage Stability : -15°C to -25°C/1 year(Do not lower than -25°C)

Molecularweight : 127kD

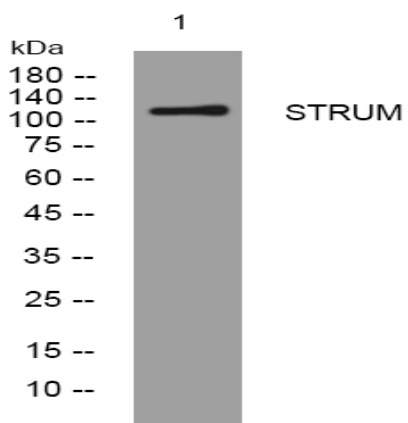
Background : This gene encodes a 134 kDa protein named strumpellin that is predicted to have multiple transmembrane domains and a spectrin-repeat-containing domain. This ubiquitously expressed gene has its highest expression in skeletal muscle. The protein is named for Strumpell disease; a form of hereditary spastic paraplegia (HSP). Spastic paraplegias are a diverse group of disorders in which the autosomal dominant forms are characterized by progressive, lower extremity spasticity caused by axonal degeneration in the terminal portions of the longest descending and ascending corticospinal tracts. More than 30 loci (SPG1-33) have been implicated in hereditary spastic paraplegia diseases. [provided by RefSeq, Aug 2009],

Function : disease:Defects in KIAA0196 are the cause of spastic paraplegia autosomal dominant type 8 (SPG8) [MIM:603563]. Spastic paraplegia is a neurodegenerative disorder characterized by a slow, gradual, progressive weakness and spasticity of the lower limbs. Spastic paraplegia is a neurodegenerative disorder characterized by a slow, gradual, progressive weakness and spasticity of the lower limbs. Rate of progression and the severity of symptoms are quite variable. Initial symptoms may include difficulty with balance, weakness and stiffness in the legs, muscle spasms, and dragging the toes when walking. In some forms of the disorder, bladder symptoms (such as incontinence) may appear, or the weakness and stiffness may spread to other parts of the body.,similarity:Belongs to the strumpellin family.,tissue specificity:Expressed ubiquitously.,

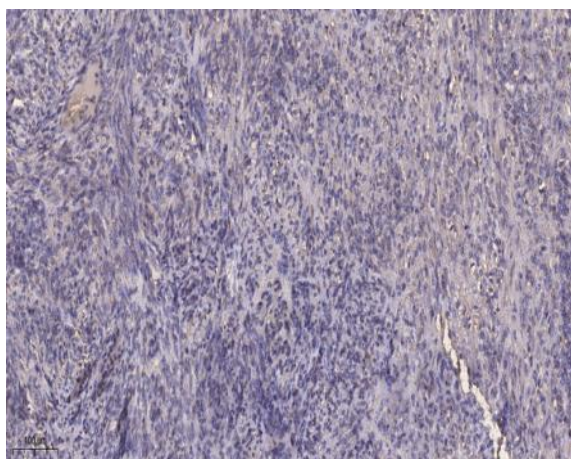
Subcellular Location : Cytoplasm, cytosol . Endoplasmic reticulum . Early endosome . Colocalizes with SYP/synaptophysin in the external molecular layer of the dentate gyrus and in motoneurons of the ventral horn of spinal cord. .

Expression : Expressed ubiquitously.

Products Images



Western blot analysis of lysates from THP-1 cells, primary antibody was diluted at 1:1000, 4° over night



Immunohistochemical analysis of paraffin-embedded human Colon cancer. 1, Antibody was diluted at 1:200(4° overnight). 2, Tris-EDTA,pH9.0 was used for antigen retrieval. 3,Secondary antibody was diluted at 1:200(room temperature, 45min).