

## ODF3A rabbit pAb

<b>Catalog No :</b>	YT6305
<b>Reactivity :</b>	Human;Mouse
<b>Applications :</b>	WB
<b>Target :</b>	ODF3A
<b>Gene Name :</b>	ODF3 SHIPPO1 TISP50
<b>Protein Name :</b>	ODF3A
<b>Human Gene Id :</b>	113746
<b>Human Swiss Prot No :</b>	Q96PU9
<b>Mouse Gene Id :</b>	69287
<b>Mouse Swiss Prot No :</b>	Q920N1
<b>Immunogen :</b>	Synthesized peptide derived from human ODF3A AA range: 160-210
<b>Specificity :</b>	This antibody detects endogenous levels of ODF3A at Human/Mouse
<b>Formulation :</b>	Liquid in PBS containing 50% glycerol, 0.5% BSA and 0.02% sodium azide.
<b>Source :</b>	Polyclonal, Rabbit,IgG
<b>Dilution :</b>	WB 1:500-2000
<b>Purification :</b>	The antibody was affinity-purified from rabbit antiserum by affinity-chromatography using epitope-specific immunogen.
<b>Concentration :</b>	1 mg/ml
<b>Storage Stability :</b>	-15°C to -25°C/1 year(Do not lower than -25°C)

**Molecularweight :** 28kD

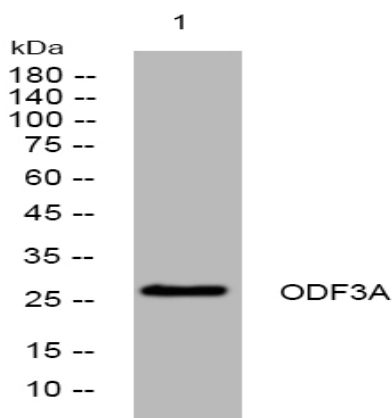
**Background :** ODF3 is a component of sperm flagella outer dense fibers, which add stiffness, elastic recoil, and protection against shearing forces during sperm movement.[supplied by OMIM, Apr 2004],

**Function :** function:Outer dense fibers are filamentous structures located on the outside of the axoneme in the midpiece and principal piece of the mammalian sperm tail. May help to maintain the passive elastic structures and elastic recoil of the sperm tail.,miscellaneous:'Shippo' is a Japanese word for tail.,similarity:Belongs to the ODF3 family.,similarity:Contains 2 DUF1309 repeats.,subcellular location:Expressed in the cytoplasmic lobe of spermatids.,tissue specificity:Testis-specific.,

**Subcellular Location :** Cytoplasm . Expressed in the cytoplasmic lobe of spermatids. .

**Expression :** Testis-specific.

## Products Images



Western blot analysis of lysates from HCT116 cells, primary antibody was diluted at 1:1000, 4° over night