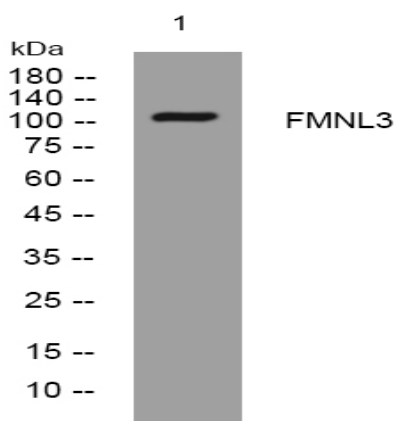


## FMNL3 rabbit pAb

<b>Catalog No :</b>	YT6304
<b>Reactivity :</b>	Human;Mouse
<b>Applications :</b>	WB
<b>Target :</b>	FMNL3
<b>Gene Name :</b>	FMNL3 FHOD3 KIAA2014 WBP3
<b>Protein Name :</b>	FMNL3
<b>Human Gene Id :</b>	91010
<b>Human Swiss Prot No :</b>	Q8IVF7
<b>Mouse Gene Id :</b>	22379
<b>Mouse Swiss Prot No :</b>	Q6ZPF4
<b>Immunogen :</b>	Synthesized peptide derived from human FMNL3 AA range: 96-146
<b>Specificity :</b>	This antibody detects endogenous levels of FMNL3 at Human/Mouse
<b>Formulation :</b>	Liquid in PBS containing 50% glycerol, 0.5% BSA and 0.02% sodium azide.
<b>Source :</b>	Polyclonal, Rabbit,IgG
<b>Dilution :</b>	WB 1:500-2000
<b>Purification :</b>	The antibody was affinity-purified from rabbit antiserum by affinity-chromatography using epitope-specific immunogen.
<b>Concentration :</b>	1 mg/ml
<b>Storage Stability :</b>	-15°C to -25°C/1 year(Do not lower than -25°C)

**Molecularweight :** 113kD**Background :** The protein encoded by this gene contains a formin homology 2 domain and has high sequence identity to the mouse Wbp3 protein. Two alternative transcripts encoding different isoforms have been described. [provided by RefSeq, Jul 2008],**Function :** similarity:Belongs to the formin homology family.,similarity:Contains 1 FH2 (formin homology 2) domain.,similarity:Contains 1 GBD/FH3 (Rho GTPase-binding/formin homology 3) domain.,**Subcellular Location :** Cytoplasm . Cell membrane ; Lipid-anchor . Enriched in lamellipodia.**Expression :** Expressed in endothelial cells.

## Products Images



Western blot analysis of lysates from K562 cells, primary antibody was diluted at 1:1000, 4° over night