

## S100A7A Polyclonal Antibody

<b>Catalog No :</b>	YT6279
<b>Reactivity :</b>	Human
<b>Applications :</b>	IHC;ELISA
<b>Target :</b>	S100A7A
<b>Fields :</b>	>>IL-17 signaling pathway
<b>Gene Name :</b>	S100A7A S100A15 S100A7L1
<b>Protein Name :</b>	S100A7A
<b>Human Gene Id :</b>	338324
<b>Human Swiss Prot No :</b>	Q86SG5
<b>Immunogen :</b>	Synthesized peptide derived from human S100A7A AA range: 32-82
<b>Specificity :</b>	This antibody detects endogenous levels of human S100A7A
<b>Formulation :</b>	Liquid in PBS containing 50% glycerol, 0.5% BSA and 0.02% sodium azide.
<b>Source :</b>	Polyclonal, Rabbit,IgG
<b>Dilution :</b>	IHC 1:50-200, ELISA(peptide)1:5000-20000
<b>Purification :</b>	The antibody was affinity-purified from rabbit antiserum by affinity-chromatography using epitope-specific immunogen.
<b>Concentration :</b>	1 mg/ml
<b>Storage Stability :</b>	-15°C to -25°C/1 year(Do not lower than -25°C)
<b>Background :</b>	function:May be involved in epidermal differentiation and inflammation and might therefore be important for the pathogenesis of psoriasis and other diseases.,similarity:Belongs to the S-100 family.,similarity:Contains 2 EF-hand

domains.,tissue specificity:Overexpressed in psoriasis.,

---

**Function :**

function:May be involved in epidermal differentiation and inflammation and might therefore be important for the pathogenesis of psoriasis and other diseases.,similarity:Belongs to the S-100 family.,similarity:Contains 2 EF-hand domains.,tissue specificity:Overexpressed in psoriasis.,

---

**Subcellular**

Cytoplasm .

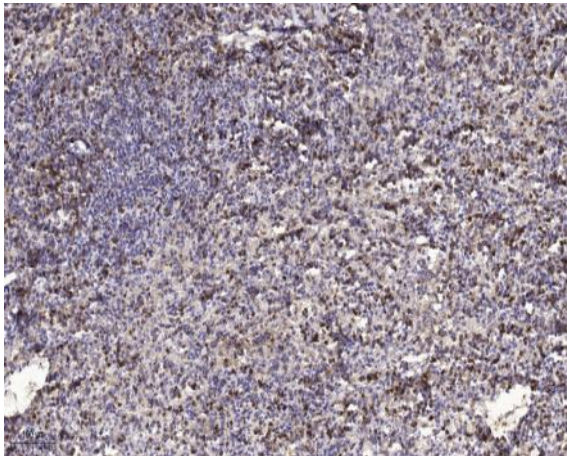
---

**Location :****Expression :**

Overexpressed in psoriasis.

---

## Products Images



Immunohistochemical analysis of paraffin-embedded human spleen tissue. 1,primary Antibody was diluted at 1:200(4° overnight). 2, Sodium citrate pH 6.0 was used for antigen retrieval(>98 °C,20min). 3,Secondary antibody was diluted at 1:200(room temperature