

**Beta-defensin 1 Polyclonal Antibody**

<b>Catalog No :</b>	YT6275
<b>Reactivity :</b>	Human;Rat;Mouse;
<b>Applications :</b>	IHC;ELISA
<b>Target :</b>	Beta-defensin 1
<b>Fields :</b>	>>ABC transporters;>>Staphylococcus aureus infection
<b>Gene Name :</b>	DEFB1 BD1 HBD1
<b>Protein Name :</b>	Beta-defensin 1
<b>Human Gene Id :</b>	1672
<b>Human Swiss Prot No :</b>	P60022
<b>Immunogen :</b>	Synthesized peptide derived from human Beta-defensin 1 AA range: 1-50
<b>Specificity :</b>	This antibody detects endogenous levels of human Beta-defensin 1
<b>Formulation :</b>	Liquid in PBS containing 50% glycerol, 0.5% BSA and 0.02% sodium azide.
<b>Source :</b>	Polyclonal, Rabbit,IgG
<b>Dilution :</b>	IHC 1:50-200, ELISA(peptide)1:5000-20000
<b>Purification :</b>	The antibody was affinity-purified from rabbit antiserum by affinity-chromatography using epitope-specific immunogen.
<b>Concentration :</b>	1 mg/ml
<b>Storage Stability :</b>	-15°C to -25°C/1 year(Do not lower than -25°C)
<b>Background :</b>	Defensins form a family of microbicidal and cytotoxic peptides made by neutrophils. Members of the defensin family are highly similar in protein sequence. This gene encodes defensin, beta 1, an antimicrobial peptide

implicated in the resistance of epithelial surfaces to microbial colonization. This gene maps in close proximity to defensin family member, defensin, alpha 1 and has been implicated in the pathogenesis of cystic fibrosis. [provided by RefSeq, Jul 2008],

---

**Function :**

function:Has bactericidal activity.,mass spectrometry:  
PubMed:7628632,similarity:Belongs to the beta-defensin family.,tissue  
specificity:Plasma.,

---

**Subcellular  
Location :**

Secreted . Membrane . Associates with tumor cell membrane-derived  
microvesicles (PubMed:23938203). .

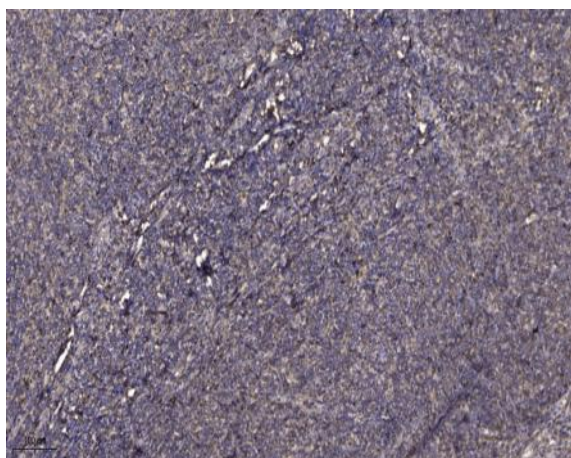
---

**Expression :**

Blood plasma. Sperm. Highly expressed in the lower head and midpiece of  
sperm. Significantly reduced levels found in the sperms of asthenozoospermia  
and leukocytospermia patients (at protein level).

---

## Products Images



Immunohistochemical analysis of paraffin-embedded human tonsil. 1, Antibody was diluted at 1:200(4° overnight). 2, Tris-EDTA,pH9.0 was used for antigen retrieval. 3,Secondary antibody was diluted at 1:200(room temperature, 30min).