

S100G Polyclonal Antibody

Catalog No :	YT6267
Reactivity :	Human;Mouse;Rat
Applications :	IHC;ELISA
Target :	S100G
Fields :	>>Mineral absorption
Gene Name :	S100G CABP9K CALB3 S100D
Protein Name :	S100G
Human Gene Id :	795
Human Swiss Prot No :	P29377
Immunogen :	Synthesized peptide derived from human S100G AA range: 1-80
Specificity :	This antibody detects endogenous levels of human S100G
Formulation :	Liquid in PBS containing 50% glycerol, 0.5% BSA and 0.02% sodium azide.
Source :	Polyclonal, Rabbit,IgG
Dilution :	IHC 1:50-200, ELISA(peptide)1:5000-20000
Purification :	The antibody was affinity-purified from rabbit antiserum by affinity-chromatography using epitope-specific immunogen.
Concentration :	1 mg/ml
Storage Stability :	-15°C to -25°C/1 year(Do not lower than -25°C)
Background :	This gene encodes calbindin D9K, a vitamin D-dependent calcium-binding protein. This cytosolic protein belongs to a family of calcium-binding proteins that includes calmodulin, parvalbumin, troponin C, and S100 protein. In the intestine,

the protein is vitamin D-dependent and its expression correlates with calcium transport activity. The protein may increase Ca^{2+} absorption by buffering Ca^{2+} in the cytoplasm and increase ATP-dependent Ca^{2+} transport in duodenal basolateral membrane vesicles. [provided by RefSeq, Jul 2008],

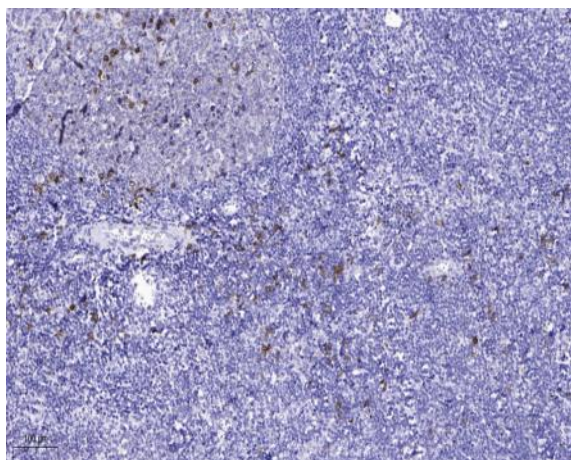
Function :

similarity:Belongs to the S-100 family.,similarity:Contains 2 EF-hand domains.,

**Subcellular
Location :**

basolateral plasma membrane,apical plasma membrane,

Products Images



Immunohistochemical analysis of paraffin-embedded human tonsil. 1, Antibody was diluted at 1:200(4 ° overnight). 2, Tris-EDTA,pH9.0 was used for antigen retrieval. 3,Secondary antibody was diluted at 1:200(room temperature, 45min).