

## Tubulin $\gamma$ Polyclonal Antibody

<b>Catalog No :</b>	YT6011
<b>Reactivity :</b>	Human;Mouse;Rat
<b>Applications :</b>	IHC;IF;ELISA
<b>Target :</b>	Tubulin Gamma
<b>Fields :</b>	>>Human papillomavirus infection
<b>Gene Name :</b>	TUBG1 TUBG
<b>Protein Name :</b>	Tubulin gamma-1 chain (Gamma-1-tubulin) (Gamma-tubulin complex component 1) (GCP-1)
<b>Human Gene Id :</b>	7283
<b>Human Swiss Prot No :</b>	P23258
<b>Mouse Gene Id :</b>	103733
<b>Mouse Swiss Prot No :</b>	P83887
<b>Immunogen :</b>	Synthetic peptide from human protein at AA range: 380-440
<b>Specificity :</b>	The antibody detects endogenous Tubulin $\gamma$
<b>Formulation :</b>	Liquid in PBS containing 50% glycerol, 0.5% BSA and 0.02% sodium azide.
<b>Source :</b>	Polyclonal, Rabbit,IgG
<b>Dilution :</b>	IHC 1:50-200, ELISA 1:10000-20000. IF 1:50-200
<b>Purification :</b>	The antibody was affinity-purified from rabbit antiserum by affinity-chromatography using epitope-specific immunogen.
<b>Concentration :</b>	1 mg/ml

---

**Storage Stability :** -15°C to -25°C/1 year(Do not lower than -25°C)

---

**Background :** This gene encodes a member of the tubulin superfamily. The encoded protein localizes to the centrosome where it binds to microtubules as part of a complex referred to as the gamma-tubulin ring complex. The protein mediates microtubule nucleation and is required for microtubule formation and progression of the cell cycle. A pseudogene of this gene is found on chromosome 7. [provided by RefSeq, Jan 2009],

---

**Function :** function:Tubulin is the major constituent of microtubules. Gamma tubulin is found at microtubule organizing centers (MTOC) such as the spindle poles or the centrosome, suggesting that it is involved in the minus-end nucleation of microtubule assembly.,mass spectrometry: PubMed:11840567,similarity:Belongs to the tubulin family.,subunit:Interacts with GCP2 and GCP3. Interacts with B9D2.,

---

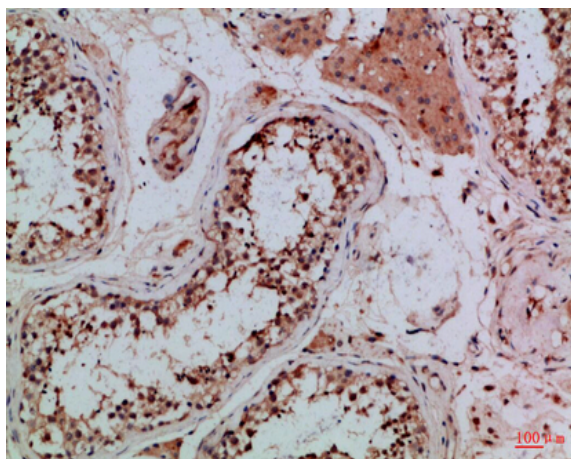
**Subcellular Location :** Cytoplasm, cytoskeleton, microtubule organizing center, centrosome . Cytoplasm, cytoskeleton, spindle . Localizes to mitotic spindle microtubules. .

---

**Expression :** Mammary cancer, Skin,

---

## Products Images



Immunohistochemical analysis of paraffin-embedded Human-testis, antibody was diluted at 1:100