

TCEAL7 Polyclonal Antibody

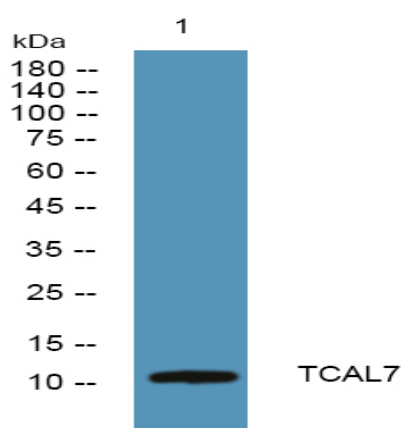
Catalog No :	YT6247
Reactivity :	Human;Mouse
Applications :	WB;IHC;IF;ELISA
Target :	TCEAL7
Gene Name :	TCEAL7
Protein Name :	TCEAL7
Human Gene Id :	56849
Human Swiss Prot No :	Q9BRU2
Immunogen :	Synthesized peptide derived from human TCEAL7 AA range: 34-84
Specificity :	This antibody detects endogenous levels of human TCEAL7
Formulation :	Liquid in PBS containing 50% glycerol, 0.5% BSA and 0.02% sodium azide.
Source :	Polyclonal, Rabbit,IgG
Dilution :	WB 1:500 - 1:2000. IHC 1:100 - 1:300. IF 1:200 - 1:1000. ELISA: 1:5000. Not yet tested in other applications.
Purification :	The antibody was affinity-purified from rabbit antiserum by affinity-chromatography using epitope-specific immunogen.
Concentration :	1 mg/ml
Storage Stability :	-15°C to -25°C/1 year(Do not lower than -25°C)
Molecularweight :	12kD
Background :	function:May be involved in transcriptional regulation.,similarity:Belongs to the TFS-II family. TFA subfamily.,

Function : function:May be involved in transcriptional regulation.,similarity:Belongs to the TFS-II family. TFA subfamily.,

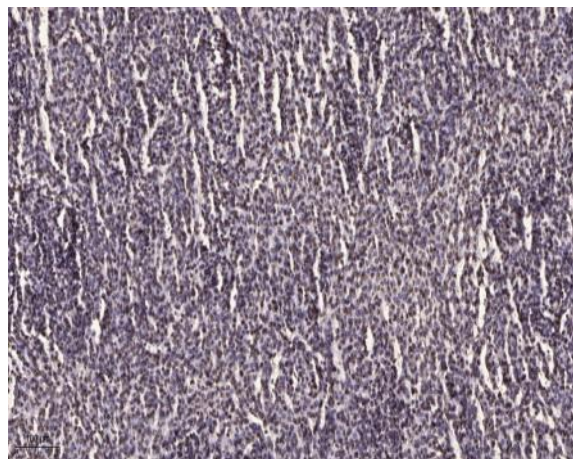
Subcellular Location : Nucleus .

Expression : Highly expressed in normal and fetal brain tissues, and weakly expressed in uterus and ovary. Down-regulated in epithelial ovarian, cervical, prostate, breast, brain and lung cancer cell lines and in brain and ovarian tumors.

Products Images



Western blot analysis of lysates from SH-SY5Y cells, primary antibody was diluted at 1:1000, 4° over night



Immunohistochemical analysis of paraffin-embedded human brain tumor. 1, Antibody was diluted at 1:200(4° overnight). 2, Tris-EDTA,pH9.0 was used for antigen retrieval. 3,Secondary antibody was diluted at 1:200(room temperature, 45min).