

## Glypican-2 Polyclonal Antibody

<b>Catalog No :</b>	YT6217
<b>Reactivity :</b>	Human;Rat;Mouse;
<b>Applications :</b>	IHC;IF;WB
<b>Target :</b>	Glypican-2
<b>Gene Name :</b>	GPC2
<b>Protein Name :</b>	Glypican-2
<b>Human Gene Id :</b>	221914
<b>Human Swiss Prot No :</b>	Q8N158
<b>Immunogen :</b>	Synthesized peptide derived from human Glypican-2
<b>Specificity :</b>	This antibody detects endogenous levels of human Glypican-2
<b>Formulation :</b>	Liquid in PBS containing 50% glycerol, 0.5% BSA and 0.02% sodium azide.
<b>Source :</b>	Polyclonal, Rabbit,IgG
<b>Dilution :</b>	IHC 1:50-200, WB 1:500-2000. IF 1:50-200
<b>Purification :</b>	The antibody was affinity-purified from rabbit antiserum by affinity-chromatography using epitope-specific immunogen.
<b>Concentration :</b>	1 mg/ml
<b>Storage Stability :</b>	-15°C to -25°C/1 year(Do not lower than -25°C)
<b>Observed Band :</b>	65kD
<b>Background :</b>	function:Cell surface proteoglycan that bears heparan sulfate. May fulfill a function related to the motile behaviors of developing neurons.,similarity:Belongs to the glypican family.,

**Function :** function:Cell surface proteoglycan that bears heparan sulfate. May fulfill a function related to the motile behaviors of developing neurons.,similarity:Belongs to the glypican family.,

---

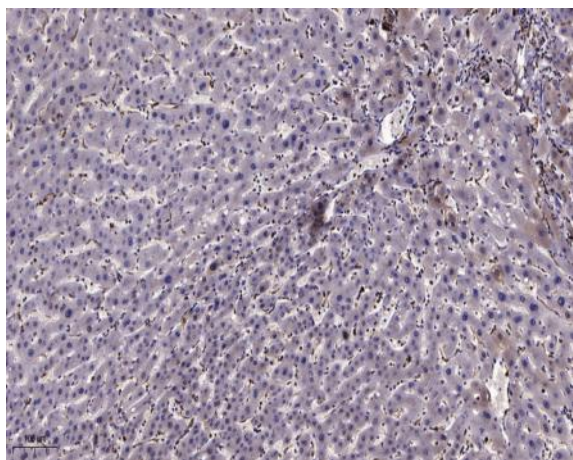
**Subcellular Location :** Cell membrane ; Lipid-anchor, GPI-anchor ; Extracellular side .; [Secreted glypican-2]: Secreted, extracellular space .

---

**Expression :** Brain,

---

## Products Images



Immunohistochemical analysis of paraffin-embedded human liver cancer. 1, Antibody was diluted at 1:200(4° overnight). 2, Tris-EDTA,pH9.0 was used for antigen retrieval. 3,Secondary antibody was diluted at 1:200(room temperature, 45min).