

MFRP Polyclonal Antibody

Catalog No :	YT6216
Reactivity :	Human;Mouse
Applications :	IHC;IF;WB
Target :	MFRP
Gene Name :	MFRP
Protein Name :	MFRP
Human Gene Id :	114902
Human Swiss Prot No :	Q9BY79
Immunogen :	Synthesized peptide derived from human MFRP
Specificity :	This antibody detects endogenous levels of human MFRP
Formulation :	Liquid in PBS containing 50% glycerol, 0.5% BSA and 0.02% sodium azide.
Source :	Polyclonal, Rabbit,IgG
Dilution :	IHC 1:50-200, WB 1:500-2000. IF 1:50-200
Purification :	The antibody was affinity-purified from rabbit antiserum by affinity-chromatography using epitope-specific immunogen.
Concentration :	1 mg/ml
Storage Stability :	-15°C to -25°C/1 year(Do not lower than -25°C)
Observed Band :	62kD
Background :	membrane frizzled-related protein(MFRP) Homo sapiens This gene encodes a member of the frizzled-related protein family. The encoded protein plays an important role in eye development and mutations in this gene have been

associated with nanophthalmos, posterior microphthalmia, retinitis pigmentosa, foveoschisis, and optic disc drusen. The protein is encoded by a bicistronic transcript which also encodes C1q and tumor necrosis factor related protein 5 (C1QTNF5). [provided by RefSeq, Jun 2013],

Function :

developmental stage:Expressed in fetal brain.,disease:Defects in C1QTNF5 are a cause of late-onset retinal degeneration (LORD) [MIM:605670]. LORD is an autosomal dominant disorder characterized by onset in the fifth to sixth decade with night blindness and punctate yellow-white deposits in the retinal fundus, progressing to severe central and peripheral degeneration, with choroidal neovascularization and chorioretinal atrophy.,disease:Defects in MFRP are the cause of microphthalmia MFRP-related (MCOPMFRP) [MIM:611040]. Microphthalmia is a clinically heterogeneous disorder of eye formation, ranging from small size of a single eye to complete bilateral absence of ocular tissues. Ocular abnormalities like opacities of the cornea and lens, scarring of the retina and choroid, cataract and other abnormalities like cataract may also be present. MCOPMFRP is characterized by posterior microphthalm

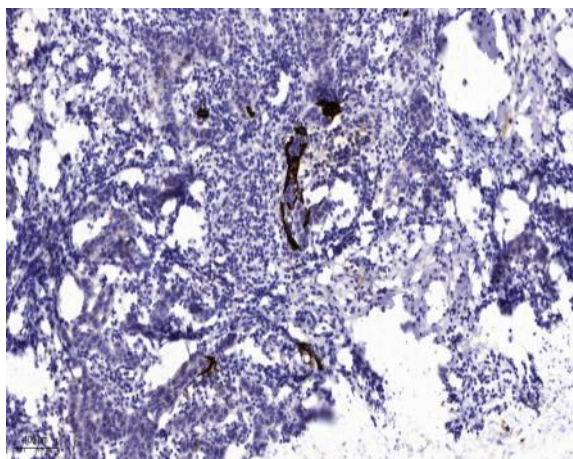
Subcellular Location :

Apical cell membrane ; Single-pass type II membrane protein .

Expression :

Specifically expressed in brain. Strongly expressed in medulla oblongata and to a lower extent in hippocampus and corpus callosum. Expressed in keratinocytes.

Products Images



Immunohistochemical analysis of paraffin-embedded human Breast cancer. 1, Antibody was diluted at 1:200(4° overnight). 2, Tris-EDTA,pH9.0 was used for antigen retrieval. 3,Secondary antibody was diluted at 1:200(room temperature, 45min).