

HPLN1 Polyclonal Antibody

Catalog No :	YT6214
Reactivity :	Human;Mouse;Rat
Applications :	IHC;IF;WB
Target :	HPLN1
Gene Name :	HAPLN1 CRTL1
Protein Name :	HPLN1
Human Gene Id :	1404
Human Swiss Prot No :	P10915
Immunogen :	Synthesized peptide derived from human HPLN1
Specificity :	This antibody detects endogenous levels of human HPLN1
Formulation :	Liquid in PBS containing 50% glycerol, 0.5% BSA and 0.02% sodium azide.
Source :	Polyclonal, Rabbit,IgG
Dilution :	IHC 1:50-200, WB 1:500-2000. IF 1:50-200
Purification :	The antibody was affinity-purified from rabbit antiserum by affinity-chromatography using epitope-specific immunogen.
Concentration :	1 mg/ml
Storage Stability :	-15°C to -25°C/1 year(Do not lower than -25°C)
Observed Band :	38kD
Background :	function:Stabilizes the aggregates of proteoglycan monomers with hyaluronic acid in the extracellular cartilage matrix.,similarity:Belongs to the HAPLN family.,similarity:Contains 1 Ig-like V-type (immunoglobulin-like)

domain.,similarity:Contains 2 Link domains.,tissue specificity:Widely expressed. Weakly expressed in the brain.,

Function :

function:Stabilizes the aggregates of proteoglycan monomers with hyaluronic acid in the extracellular cartilage matrix.,similarity:Belongs to the HAPLN family.,similarity:Contains 1 Ig-like V-type (immunoglobulin-like) domain.,similarity:Contains 2 Link domains.,tissue specificity:Widely expressed. Weakly expressed in the brain.,

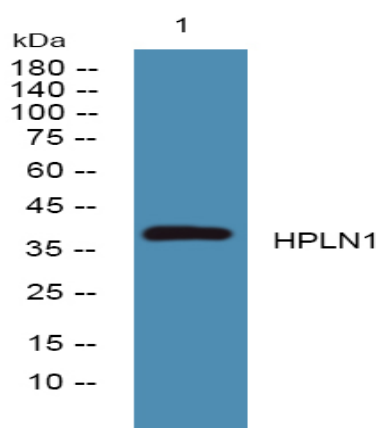
Subcellular Location :

Secreted, extracellular space, extracellular matrix.

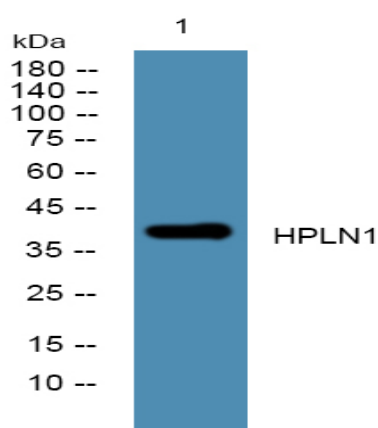
Expression :

Widely expressed. Weakly expressed in the brain.

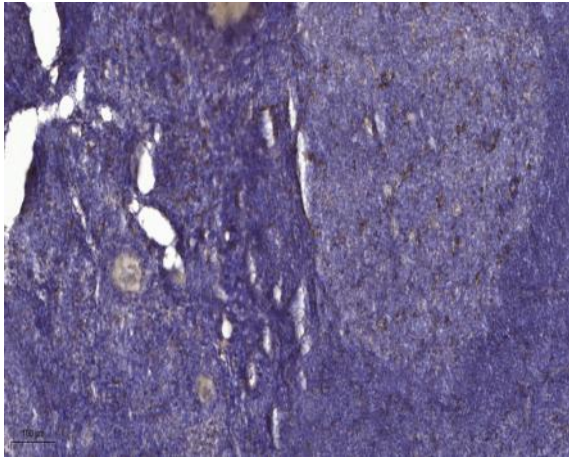
Products Images



Western blot analysis of lysates from SH-SY5Y cells, primary antibody was diluted at 1:1000, 4° over night



Western blot analysis of lysates from HCT116 cells, primary antibody was diluted at 1:1000, 4° over night



Immunohistochemical analysis of paraffin-embedded human tonsil. 1, Antibody was diluted at 1:200(4 ° overnight). 2, Tris-EDTA,pH9.0 was used for antigen retrieval. 3,Secondary antibody was diluted at 1:200(room temperature, 30min).