

## CTGF Polyclonal Antibody

|                              |   |
|------------------------------|---|
| <b>Catalog No :</b>          | YT6207  |
| <b>Reactivity :</b>          | Human;Mouse;Rat   |
| <b>Applications :</b>        | IHC;IF;WB   |
| <b>Target :</b>              | CTGF  |
| <b>Fields :</b>              | >>Apelin signaling pathway;>>Hippo signaling pathway  |
| <b>Gene Name :</b>           | CTGF CCN2 HCS24 IGFBP8  |
| <b>Protein Name :</b>        | CTGF  |
| <b>Human Gene Id :</b>       | 1490  |
| <b>Human Swiss Prot No :</b> | P29279  |
| <b>Immunogen :</b>           | Synthesized peptide derived from human CTGF AA range: 130-210   |
| <b>Specificity :</b>         | This antibody detects endogenous levels of human CTGF   |
| <b>Formulation :</b>         | Liquid in PBS containing 50% glycerol, 0.5% BSA and 0.02% sodium azide.   |
| <b>Source :</b>              | Polyclonal, Rabbit,IgG  |
| <b>Dilution :</b>            | IHC 1:50-200, WB 1:500-2000. IF 1:50-200  |
| <b>Purification :</b>        | The antibody was affinity-purified from rabbit antiserum by affinity-chromatography using epitope-specific immunogen. |
| <b>Concentration :</b>       | 1 mg/ml   |
| <b>Storage Stability :</b>   | -15°C to -25°C/1 year(Do not lower than -25°C)  |
| <b>Observed Band :</b>       | 37kD  |

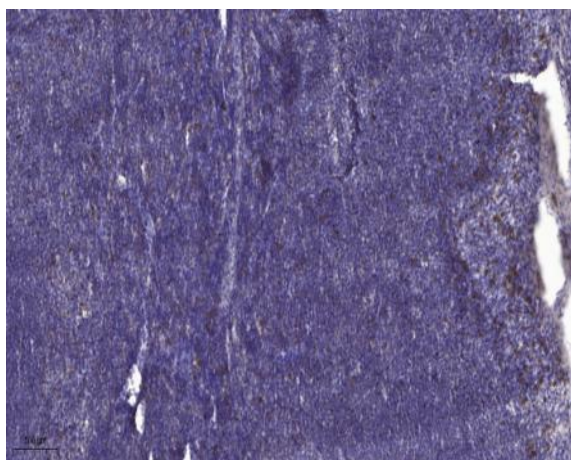
**Background :** The protein encoded by this gene is a mitogen that is secreted by vascular endothelial cells. The encoded protein plays a role in chondrocyte proliferation and differentiation, cell adhesion in many cell types, and is related to platelet-derived growth factor. Certain polymorphisms in this gene have been linked with a higher incidence of systemic sclerosis. [provided by RefSeq, Nov 2009],

**Function :** function:Major connective tissue mitogen secreted by vascular endothelial cells. Promotes proliferation and differentiation of chondrocytes. Mediates heparin- and divalent cation-dependent cell adhesion in many cell types including fibroblasts, myofibroblasts, endothelial and epithelial cells. Enhances fibroblast growth factor-induced DNA synthesis.,similarity:Belongs to the CCN family.,similarity:Contains 1 CTCK (C-terminal cystine knot-like) domain.,similarity:Contains 1 IGFBP N-terminal domain.,similarity:Contains 1 TSP type-1 domain.,similarity:Contains 1 VWFC domain.,subunit:Monomer.,

**Subcellular Location :** Secreted, extracellular space, extracellular matrix . Secreted .

**Expression :** Expressed in bone marrow and thymic cells. Also expressed one of two Wilms tumors tested.

## Products Images



Immunohistochemical analysis of paraffin-embedded human tonsil. 1, Antibody was diluted at 1:200(4° overnight). 2, Tris-EDTA,pH9.0 was used for antigen retrieval. 3,Secondary antibody was diluted at 1:200(room temperature, 30min).