

PCP Polyclonal Antibody

Catalog No :	YT6189
Reactivity :	Human;Mouse
Applications :	IHC;IF;WB
Target :	PCP
Fields :	>>Renin-angiotensin system;>>Protein digestion and absorption
Gene Name :	PRCP PCP
Protein Name :	PCP
Human Gene Id :	5547
Human Swiss Prot No :	P42785
Immunogen :	Synthesized peptide derived from human PCP
Specificity :	This antibody detects endogenous levels of human PCP
Formulation :	Liquid in PBS containing 50% glycerol, 0.5% BSA and 0.02% sodium azide.
Source :	Polyclonal, Rabbit,IgG
Dilution :	IHC 1:50-200, WB 1:500-2000. IF 1:50-200
Purification :	The antibody was affinity-purified from rabbit antiserum by affinity-chromatography using epitope-specific immunogen.
Concentration :	1 mg/ml
Storage Stability :	-15°C to -25°C/1 year(Do not lower than -25°C)
Observed Band :	100kD

Background :

This gene encodes a member of the peptidase S28 family of serine exopeptidases. The encoded preproprotein is proteolytically processed to generate the mature lysosomal prolylcarboxypeptidase. This enzyme cleaves C-terminal amino acids linked to proline in peptides such as angiotension II, III and des-Arg9-bradykinin. The cleavage occurs at acidic pH, but the enzyme activity is retained with some substrates at neutral pH. This enzyme has been shown to be an activator of the cell matrix-associated prekallikrein. The importance of angiotension II, one of the substrates of this enzyme, in regulating blood pressure and electrolyte balance suggests that this gene may be related to essential hypertension. A pseudogene of this gene has been identified on chromosome 2. Alternative splicing results in multiple transcript variants, at least one of which encodes an isoform that is proteolytically processed. [pr

Function :

catalytic activity: Cleavage of a -Pro-|-Xaa bond to release a C-terminal amino acid., function: Cleaves C-terminal amino acids linked to proline in peptides such as angiotensin II, III and des-Arg9-bradykinin. This cleavage occurs at acidic pH, but enzymatic activity is retained with some substrates at neutral pH., similarity: Belongs to the peptidase S28 family., subunit: Homodimer., tissue specificity: Highest levels in placenta, lung and liver. Also present in heart, brain, pancreas and kidney.,

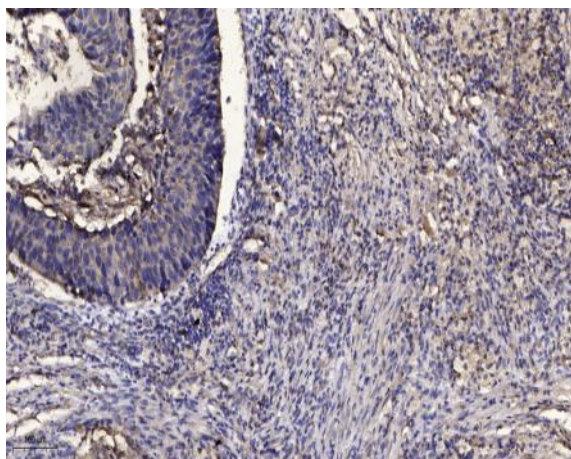
Subcellular

Lysosome.

Location :**Expression :**

Highest levels in placenta, lung and liver. Also present in heart, brain, pancreas and kidney.

Products Images



Immunohistochemical analysis of paraffin-embedded human Squamous cell carcinoma of lung. 1, Antibody was diluted at 1:200(4° overnight). 2, Tris-EDTA, pH9.0 was used for antigen retrieval. 3, Secondary antibody was diluted at 1:200(room temperature, 45min).