

HXA10 Polyclonal Antibody

Catalog No :	YT6179
Reactivity :	Human;Mouse
Applications :	IHC;IF;WB
Target :	HXA10
Fields :	>>Transcriptional misregulation in cancer
Gene Name :	HOXA10 HOX1H
Protein Name :	HXA10
Human Gene Id :	3206
Human Swiss Prot No :	P31260
Immunogen :	Synthesized peptide derived from human HXA10
Specificity :	This antibody detects endogenous levels of human HXA10
Formulation :	Liquid in PBS containing 50% glycerol, 0.5% BSA and 0.02% sodium azide.
Source :	Polyclonal, Rabbit,IgG
Dilution :	IHC 1:50-200, WB 1:500-2000. IF 1:50-200
Purification :	The antibody was affinity-purified from rabbit antiserum by affinity-chromatography using epitope-specific immunogen.
Concentration :	1 mg/ml
Storage Stability :	-15°C to -25°C/1 year(Do not lower than -25°C)
Observed Band :	42kD

Background :

In vertebrates, the genes encoding the class of transcription factors called homeobox genes are found in clusters named A, B, C, and D on four separate chromosomes. Expression of these proteins is spatially and temporally regulated during embryonic development. This gene is part of the A cluster on chromosome 7 and encodes a DNA-binding transcription factor that may regulate gene expression, morphogenesis, and differentiation. More specifically, it may function in fertility, embryo viability, and regulation of hematopoietic lineage commitment. Alternatively spliced transcript variants have been described. Read-through transcription also exists between this gene and the downstream homeobox A9 (HOXA9) gene. [provided by RefSeq, Mar 2011],

Function :

function:Sequence-specific transcription factor which is part of a developmental regulatory system that provides cells with specific positional identities on the anterior-posterior axis. Binds to the DNA sequence 5'-AA[AT]TTTTATTAC-3'.,similarity:Belongs to the Abd-B homeobox family.,similarity:Contains 1 homeobox DNA-binding domain.,

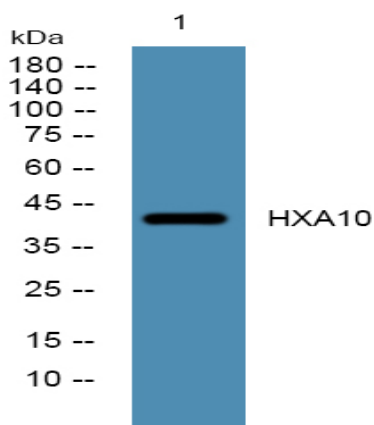
Subcellular Location :

Nucleus.

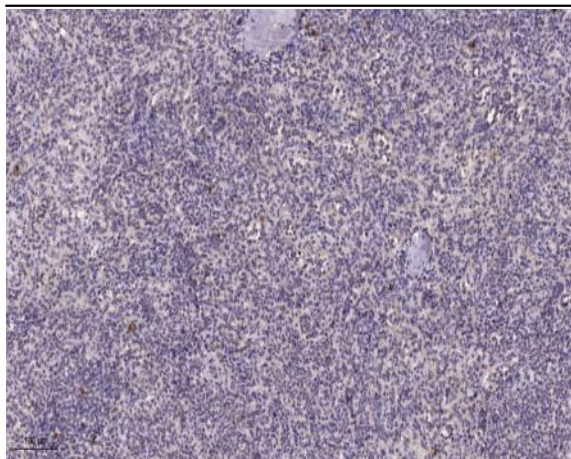
Expression :

Caudate nucleus,Kidney,Muscle,Salivary gland,

Products Images



Western blot analysis of lysates from K562 cells, primary antibody was diluted at 1:1000, 4° over night



Immunohistochemical analysis of paraffin-embedded human spleen. 1, Tris-EDTA, pH 9.0 was used for antigen retrieval. 2 Antibody was diluted at 1:200 (4° overnight). 3, Secondary antibody was diluted at 1:200 (room temperature, 45 min).