

CCD19 Polyclonal Antibody

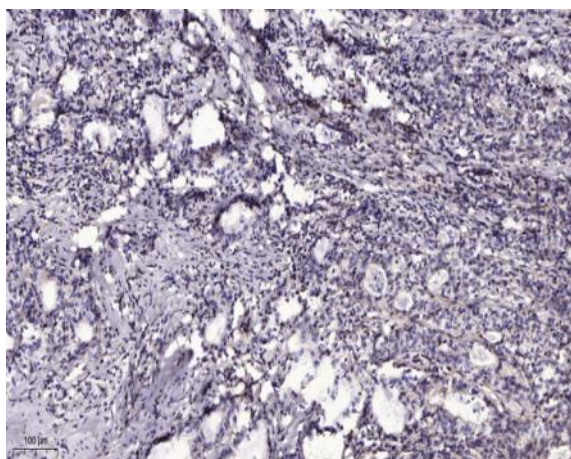
Catalog No :	YT6177
Reactivity :	Human;Mouse
Applications :	IHC;IF;WB
Target :	CCD19
Gene Name :	CCDC19 NESG1
Protein Name :	CCD19
Human Gene Id :	25790
Human Swiss Prot No :	Q9UL16
Immunogen :	Synthesized peptide derived from human CCD19
Specificity :	This antibody detects endogenous levels of human CCD19
Formulation :	Liquid in PBS containing 50% glycerol, 0.5% BSA and 0.02% sodium azide.
Source :	Polyclonal, Rabbit,IgG
Dilution :	IHC 1:50-200, WB 1:500-2000. IF 1:50-200
Purification :	The antibody was affinity-purified from rabbit antiserum by affinity-chromatography using epitope-specific immunogen.
Concentration :	1 mg/ml
Storage Stability :	-15°C to -25°C/1 year(Do not lower than -25°C)
Observed Band :	60kD
Background :	tissue specificity:Expressed in nasopharyngeal epithelium and trachea but not in esophagus, stomach, large intestine, liver, cerebrum, heart, bladder, kidney, thymus, or lung.,

Function : tissue specificity: Expressed in nasopharyngeal epithelium and trachea but not in esophagus, stomach, large intestine, liver, cerebrum, heart, bladder, kidney, thymus, or lung.,

Subcellular Location : Cytoplasm, cytoskeleton, cilium axoneme . Cytoplasm, cytoskeleton, flagellum axoneme . Located in the proximal region of respiratory cilia. .

Expression : Expressed in respiratory cells and in sperm (at protein level) (PubMed:33139725). Expressed in nasopharyngeal epithelium and trachea (PubMed:10524255).

Products Images



Immunohistochemical analysis of paraffin-embedded human Gastric adenocarcinoma. 1, Antibody was diluted at 1:200(4° overnight). 2, Tris-EDTA,pH9.0 was used for antigen retrieval. 3,Secondary antibody was diluted at 1:200(room temperature, 45min).