

## PLD4 Polyclonal Antibody

<b>Catalog No :</b>	YT6153
<b>Reactivity :</b>	Human;Mouse;Rat
<b>Applications :</b>	WB;IHC
<b>Target :</b>	PLD4
<b>Fields :</b>	>>Glycerophospholipid metabolism;>>Ether lipid metabolism;>>Metabolic pathways
<b>Gene Name :</b>	PLD4 C14orf175 UNQ2488/PRO5775
<b>Protein Name :</b>	Phospholipase D4 (PLD 4) (EC 3.1.4.4) (Choline phosphatase 4) (Phosphatidylcholine-hydrolyzing phospholipase D4)
<b>Human Gene Id :</b>	122618
<b>Human Swiss Prot No :</b>	Q96BZ4
<b>Mouse Gene Id :</b>	104759
<b>Mouse Swiss Prot No :</b>	Q8BG07
<b>Immunogen :</b>	Synthesized peptide derived from human PLD4 Polyclonal
<b>Specificity :</b>	This antibody detects endogenous levels of PLD4.
<b>Formulation :</b>	Liquid in PBS containing 50% glycerol, 0.5% BSA and 0.02% sodium azide.
<b>Source :</b>	Polyclonal, Rabbit,IgG
<b>Dilution :</b>	WB 1:500-2000;IHC 1:50-300
<b>Purification :</b>	The antibody was affinity-purified from rabbit antiserum by affinity-chromatography using epitope-specific immunogen.
<b>Concentration :</b>	1 mg/ml

**Storage Stability :** -15°C to -25°C/1 year (Do not lower than -25°C)

**Observed Band :** 55kD

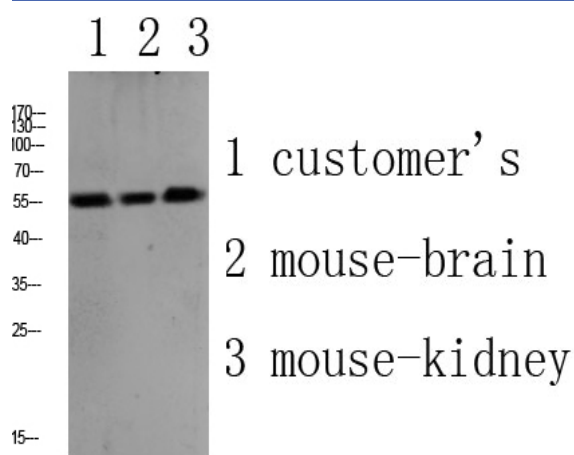
**Background :** catalytic activity: A phosphatidylcholine + H<sub>2</sub>O = choline + a phosphatidate., similarity: Belongs to the phospholipase D family., similarity: Contains 2 PLD phosphodiesterase domains.,

**Function :** catalytic activity: A phosphatidylcholine + H<sub>2</sub>O = choline + a phosphatidate., similarity: Belongs to the phospholipase D family., similarity: Contains 2 PLD phosphodiesterase domains.,

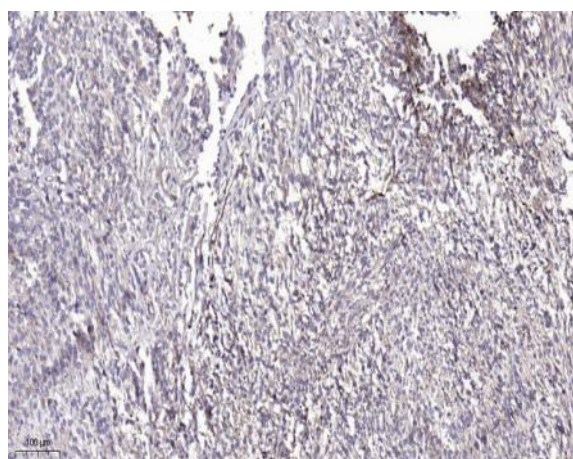
**Subcellular Location :** Endoplasmic reticulum membrane ; Single-pass type II membrane protein . Golgi apparatus, trans-Golgi network membrane ; Single-pass type II membrane protein . Nucleus . Early endosome . Cytoplasmic vesicle, phagosome . Activation of microglia induces translocation of PLD4 from the nucleus to the phagosomes. .

**Expression :** B-cell, T-cell,

## Products Images



Western blot analysis of various lysate, antibody was diluted at 1000. Secondary antibody (catalog#: RS0002) was diluted at 1:20000



Immunohistochemical analysis of paraffin-embedded human Colon cancer. 1, Antibody was diluted at 1:200 (4° overnight). 2, Tris-EDTA, pH 9.0 was used for antigen retrieval. 3, Secondary antibody was diluted at 1:200 (room temperature, 45 min).