

**Tmem72 Polyclonal Antibody**

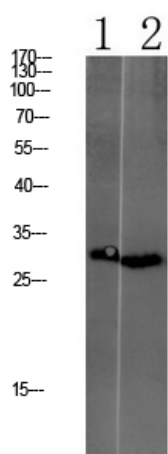
|                              |   |
|------------------------------|---|
| <b>Catalog No :</b>          | YT6166  |
| <b>Reactivity :</b>          | Human;Mouse;Rat   |
| <b>Applications :</b>        | WB;ELISA  |
| <b>Target :</b>              | Tmem72  |
| <b>Gene Name :</b>           | TMEM72 C10orf127 KSP37  |
| <b>Protein Name :</b>        | Transmembrane protein 72 (Kidney-specific secretory protein of 37 kDa)  |
| <b>Human Gene Id :</b>       | 643236  |
| <b>Human Swiss Prot No :</b> | A0PK05  |
| <b>Mouse Gene Id :</b>       | 319776  |
| <b>Mouse Swiss Prot No :</b> | Q8C3K5  |
| <b>Immunogen :</b>           | Synthesized peptide derived from human Tmem72 Polyclonal  |
| <b>Specificity :</b>         | This antibody detects endogenous levels of Tmem72.  |
| <b>Formulation :</b>         | Liquid in PBS containing 50% glycerol, 0.5% BSA and 0.02% sodium azide.   |
| <b>Source :</b>              | Polyclonal, Rabbit,IgG  |
| <b>Dilution :</b>            | WB 1:500-2000, ELISA 1:10000-20000  |
| <b>Purification :</b>        | The antibody was affinity-purified from rabbit antiserum by affinity-chromatography using epitope-specific immunogen. |
| <b>Concentration :</b>       | 1 mg/ml   |
| <b>Storage Stability :</b>   | -15°C to -25°C/1 year(Do not lower than -25°C)  |

**Observed Band :** 30kD

**Background :** This gene encodes a transmembrane protein which may be expressed specifically in the kidney. [provided by RefSeq, Sep 2016],

**Subcellular Location :** Membrane ; Multi-pass membrane protein .

## Products Images



1 mouse-liver  
2 CACO2

Western blot analysis of various lysate, antibody was diluted at 1000. Secondary antibody(catalog#:RS0002) was diluted at 1:20000