

## Granzyme B Polyclonal Antibody

<b>Catalog No :</b>	YT6137
<b>Reactivity :</b>	Human;Mouse;Rat
<b>Applications :</b>	WB;IHC;IF;ELISA
<b>Target :</b>	Granzyme B
<b>Fields :</b>	>>Apoptosis;>>Natural killer cell mediated cytotoxicity;>>Type I diabetes mellitus;>>Transcriptional misregulation in cancer;>>Autoimmune thyroid disease;>>Allograft rejection;>>Graft-versus-host disease
<b>Gene Name :</b>	GZMB CGL1 CSPB CTLA1 GRB
<b>Protein Name :</b>	Granzyme B (EC 3.4.21.79) (C11) (CTLA-1) (Cathepsin G-like 1) (CTSG1) (Cytotoxic T-lymphocyte proteinase 2) (Lymphocyte protease) (Fragmentin-2) (Granzyme-2) (Human lymphocyte protein) (HLP) (SECT) (
<b>Human Gene Id :</b>	3002
<b>Human Swiss Prot No :</b>	P10144
<b>Mouse Gene Id :</b>	14939
<b>Mouse Swiss Prot No :</b>	P04187
<b>Rat Gene Id :</b>	100361468
<b>Rat Swiss Prot No :</b>	P18291
<b>Immunogen :</b>	Synthesized peptide derived from human Granzyme B Polyclonal AA range: 81-130
<b>Specificity :</b>	This antibody detects endogenous levels of Granzyme B.
<b>Formulation :</b>	Liquid in PBS containing 50% glycerol, 0.5% BSA and 0.02% sodium azide.
<b>Source :</b>	Polyclonal, Rabbit,IgG

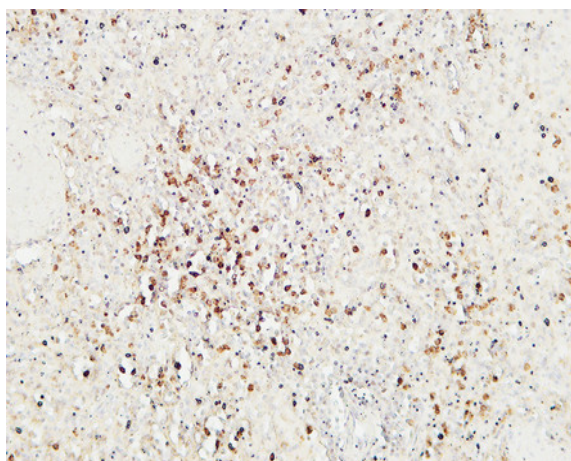
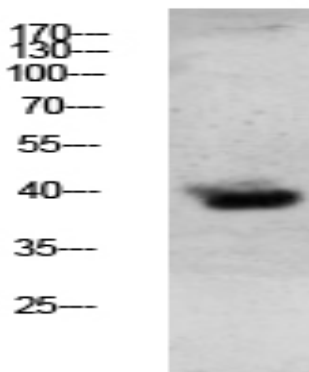
---

<b>Dilution :</b>	IHC: 100-300.WB 1:500-2000, ELISA 1:10000-20000. IF 1:50-200
<b>Purification :</b>	The antibody was affinity-purified from rabbit antiserum by affinity-chromatography using epitope-specific immunogen.
<b>Concentration :</b>	1 mg/ml
<b>Storage Stability :</b>	-15°C to -25°C/1 year(Do not lower than -25°C)
<b>Observed Band :</b>	38kD
<b>Cell Pathway :</b>	Natural killer cell mediated cytotoxicity;Type I diabetes mellitus;Autoimmune thyroid disease;Allograft rejection;Graft-versus-host disease;
<b>Background :</b>	This gene encodes a member of the granzyme subfamily of proteins, part of the peptidase S1 family of serine proteases. The encoded preproprotein is secreted by natural killer (NK) cells and cytotoxic T lymphocytes (CTLs) and proteolytically processed to generate the active protease, which induces target cell apoptosis. This protein also processes cytokines and degrades extracellular matrix proteins, and these roles are implicated in chronic inflammation and wound healing. Expression of this gene may be elevated in human patients with cardiac fibrosis. [provided by RefSeq, Sep 2016],
<b>Function :</b>	catalytic activity:Preferential cleavage: -Asp- -Xaa- >> -Asn- -Xaa- > -Met- -Xaa-, -Ser- -Xaa-.,function:This enzyme is necessary for target cell lysis in cell-mediated immune responses. It cleaves after Asp. Seems to be linked to an activation cascade of caspases (aspartate-specific cysteine proteases) responsible for apoptosis execution. Cleaves caspase-3, -7, -9 and 10 to give rise to active enzymes mediating apoptosis.,induction:By staphylococcal enterotoxin A (SEA) in peripheral blood leukocytes.,similarity:Belongs to the peptidase S1 family.,similarity:Belongs to the peptidase S1 family. Granzyme subfamily.,similarity:Contains 1 peptidase S1 domain.,subcellular location:Cytoplasmic granules of cytolytic T-lymphocytes and natural killer cells.,
<b>Subcellular Location :</b>	Secreted . Cytolytic granule . Delivered into the target cell by perforin (PubMed:20038786). .
<b>Expression :</b>	Breast carcinoma,Large granular lymphocyte leukemia,Pancreas,

---

## Products Images

Western blot analysis of mouse-lung lysate, antibody was diluted at 1000. Secondary antibody(catalog#:RS0002) was diluted at 1:20000



Immunohistochemical analysis of paraffin-embedded Human spleen. 1, Antibody was diluted at 1:200(4° overnight). 2, High-pressure and temperature EDTA, pH8.0 was used for antigen retrieval. 3,Secondary antibody was diluted at 1:200(room temperature, 30min).