

C8 α Polyclonal Antibody

Catalog No :	YT6096
Reactivity :	Human;Mouse
Applications :	WB;ELISA
Target :	C8 α
Fields :	>>Complement and coagulation cascades;>>Prion disease;>>Amoebiasis;>>Coronavirus disease - COVID-19;>>Systemic lupus erythematosus
Gene Name :	C8A
Protein Name :	C8 α
Human Gene Id :	731
Human Swiss Prot No :	P07357
Mouse Gene Id :	230558
Mouse Swiss Prot No :	Q8K182
Immunogen :	Synthesized peptide derived from human C8 α . at AA range: 201-250
Specificity :	C8 α Polyclonal Antibody detects endogenous levels of C8 α
Formulation :	Liquid in PBS containing 50% glycerol, 0.5% BSA and 0.02% sodium azide.
Source :	Polyclonal, Rabbit,IgG
Dilution :	WB 1:500-2000, ELISA 1:10000-20000
Purification :	The antibody was affinity-purified from rabbit antiserum by affinity-chromatography using epitope-specific immunogen.
Concentration :	1 mg/ml

Storage Stability : -15°C to -25°C/1 year(Do not lower than -25°C)

Observed Band : 60kD

Cell Pathway : Complement and coagulation cascades;Prion diseases;Systemic lupus erythematosus;

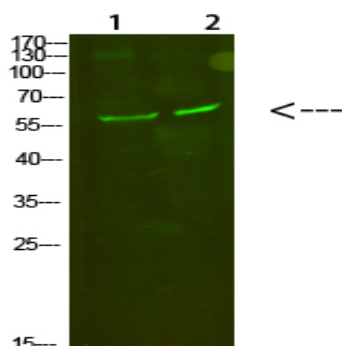
Background : C8 is a component of the complement system and contains three polypeptides, alpha, beta and gamma. This gene encodes the alpha subunit of C8. C8 participates in the formation of the membrane attack complex (MAC). The MAC assembles on bacterial membranes to form a pore, permitting disruption of bacterial membrane organization. Mutations in this gene cause complement C8 alpha-gamma deficiency. [provided by RefSeq, Nov 2008],

Function : disease:Defects in C8A are a cause of complement C8 deficiency type I [MIM:120950]. Patients with deficiency of C8 suffer from recurrent bacterial infections, predominantly from Neisseria meningitidis.,function:C8 is a constituent of the membrane attack complex. C8 binds to the C5b-7 complex, forming the C5b-8 complex. C5-b8 binds C9 and acts as a catalyst in the polymerization of C9.,similarity:Belongs to the complement C6/C7/C8/C9 family.,similarity:Contains 1 EGF-like domain.,similarity:Contains 1 LDL-receptor class A domain.,similarity:Contains 1 MACPF domain.,similarity:Contains 2 TSP type-1 domains.,subunit:C8 is composed of three chains: alpha, beta and gamma. The alpha and gamma chains are disulfide bonded.,

Subcellular Location : Secreted. Cell membrane; Multi-pass membrane protein. Secreted as soluble protein. Inserts into the cell membrane of target cells.

Expression : Blood,Liver,Plasma,

Products Images



Western Blot analysis of 1,mouse-kidney 2,mouse-heart cells using primary antibody diluted at 1:500(4°C overnight). Secondary antibody:Goat Anti-rabbit IgG IRDye 800(diluted at 1:5000, 25°C, 1 hour)