

GCM2 Polyclonal Antibody

Catalog No :	YT6090
Reactivity :	Human;Mouse;Rat
Applications :	WB;ELISA
Target :	GCM2
Fields :	>>Parathyroid hormone synthesis, secretion and action
Gene Name :	GCM2
Protein Name :	GCM2
Human Gene Id :	9247
Human Swiss Prot No :	O75603
Mouse Gene Id :	107889
Mouse Swiss Prot No :	O09102
Immunogen :	Synthesized peptide derived from human GCM2. at AA range: 21-70
Specificity :	GCM2 Polyclonal Antibody detects endogenous levels of GCM2
Formulation :	Liquid in PBS containing 50% glycerol, 0.5% BSA and 0.02% sodium azide.
Source :	Polyclonal, Rabbit,IgG
Dilution :	WB 1:500-2000, ELISA 1:10000-20000
Purification :	The antibody was affinity-purified from rabbit antiserum by affinity-chromatography using epitope-specific immunogen.
Concentration :	1 mg/ml

Storage Stability : -15°C to -25°C/1 year(Do not lower than -25°C)

Observed Band : 56kD

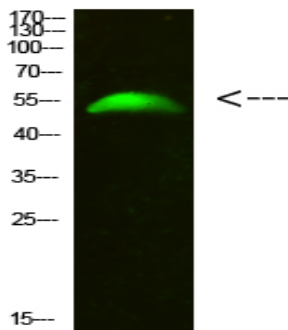
Background : This gene is a homolog of the Drosophila glial cells missing gene, which is thought to act as a binary switch between neuronal and glial cell determination. The protein encoded by this gene contains a conserved N-terminal GCM motif that has DNA-binding activity. The protein is a transcription factor that acts as a master regulator of parathyroid development. It has been suggested that this transcription factor might mediate the effect of calcium on parathyroid hormone expression and secretion in parathyroid cells. Mutations in this gene are associated with hypoparathyroidism. [provided by RefSeq, Jul 2008],

Function : function:Probable transcriptional regulator.,similarity:Contains 1 GCM DNA-binding domain.,

Subcellular Location : Nucleus .

Expression : Brain,Fetal brain,

Products Images



Western Blot analysis of 293T cells using primary antibody diluted at 1:500(4°C overnight). Secondary antibody:Goat Anti-rabbit IgG IRDye 800(diluted at 1:5000, 25°C, 1 hour)