

GABA T-1 Polyclonal Antibody

Catalog No :	YT5844
Reactivity :	Human;Mouse;Rat
Applications :	WB;IHC;IF;ELISA
Target :	GABA T-1
Fields :	>>Synaptic vesicle cycle;>>GABAergic synapse
Gene Name :	SLC6A1 GABATR GABT1 GAT1
Protein Name :	Sodium- and chloride-dependent GABA transporter 1 (GAT-1) (Solute carrier family 6 member 1)
Human Gene Id :	6529
Human Swiss Prot No :	P30531
Mouse Gene Id :	232333
Mouse Swiss Prot No :	P31648
Rat Swiss Prot No :	P23978
Immunogen :	The antiserum was produced against synthesized peptide derived from the Internal region of human SLC6A1. AA range:170-220
Specificity :	The antibody detects endogenous GABA T-1
Formulation :	Liquid in PBS containing 50% glycerol, 0.5% BSA and 0.02% sodium azide.
Source :	Polyclonal, Rabbit,IgG
Dilution :	WB 1:500-2000,IHC 1:500-200, ELISA 1:10000-20000. IF 1:50-200
Purification :	The antibody was affinity-purified from rabbit antiserum by affinity-chromatography using epitope-specific immunogen.

Concentration : 1 mg/ml

Storage Stability : -15°C to -25°C/1 year(Do not lower than -25°C)

Observed Band : 50kD

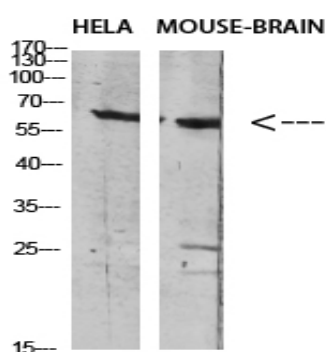
Background : The SLC6A1 gene encodes a gamma-aminobutyric acid (GABA) transporter, which removes GABA from the synaptic cleft (Hirunsatit et al., 2009 [PubMed 19077666]).[supplied by OMIM, Jul 2009],

Function : domain:The PDZ domain-binding motif is involved in the interaction with MPP5.,function:Terminates the action of GABA by its high affinity sodium-dependent reuptake into presynaptic terminals.,miscellaneous:This protein is the target of psychomotor stimulants such as amphetamines or cocaine.,similarity:Belongs to the sodium:neurotransmitter symporter (SNF) family.,subcellular location:Localized at the plasma membrane and in a subset of intracellular vesicles. Localized at the presynaptic terminals of interneurons.,subunit:Interacts with MPP5.,

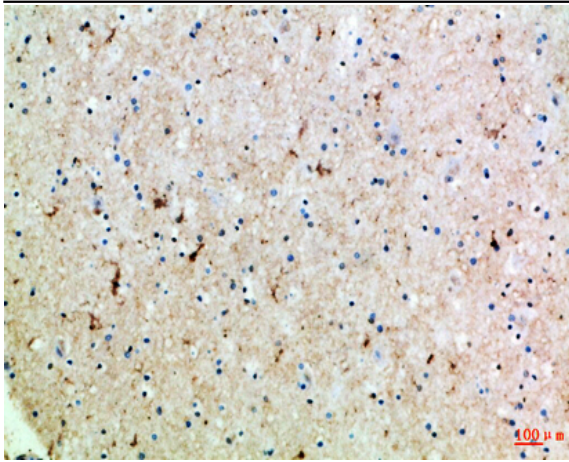
Subcellular Location : Cell membrane; Multi-pass membrane protein. Membrane; Multi-pass membrane protein. Cell junction, synapse, presynapse . Localized at the plasma membrane and in a subset of intracellular vesicles. Localized at the presynaptic terminals of interneurons (By similarity). .

Expression : Brain,

Products Images



Western blot analysis of HELA MOUSE-BRAIN Cell Lysate using antibody. Secondary antibody(catalog#:RS0002) was diluted at 1:20000



Immunohistochemical analysis of paraffin-embedded Human-brain, antibody was diluted at 1:100