

CTXL Polyclonal Antibody

Catalog No :	YT6056
Reactivity :	Human;Mouse
Applications :	WB;ELISA
Target :	CTXL
Gene Name :	VSIG2 CTH CTXL UNQ2770/PRO7154
Protein Name :	CTXL
Human Gene Id :	23584
Human Swiss Prot No :	Q96IQ7
Mouse Gene Id :	57276
Mouse Swiss Prot No :	Q9Z109
Immunogen :	Synthesized peptide derived from human CTXL. at AA range: 260-290
Specificity :	This antibody detects endogenous levels of CTXL
Formulation :	Liquid in PBS containing 50% glycerol, 0.5% BSA and 0.02% sodium azide.
Source :	Polyclonal, Rabbit,IgG
Dilution :	WB 1:500-2000, ELISA 1:10000-20000
Purification :	The antibody was affinity-purified from rabbit antiserum by affinity-chromatography using epitope-specific immunogen.
Concentration :	1 mg/ml
Storage Stability :	-15°C to -25°C/1 year(Do not lower than -25°C)

Observed Band : 34kD

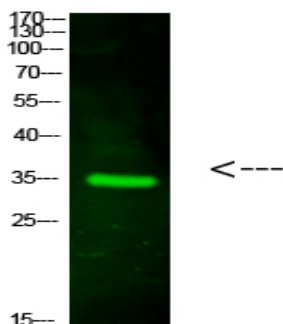
Background : similarity:Contains 1 Ig-like C2-type (immunoglobulin-like) domain.,similarity:Contains 1 Ig-like V-type (immunoglobulin-like) domain.,tissue specificity:Highly expressed in stomach, colon, prostate, trachea and thyroid glands and weakly in bladder and lung.,

Function : similarity:Contains 1 Ig-like C2-type (immunoglobulin-like) domain.,similarity:Contains 1 Ig-like V-type (immunoglobulin-like) domain.,tissue specificity:Highly expressed in stomach, colon, prostate, trachea and thyroid glands and weakly in bladder and lung.,

Subcellular Location : Membrane ; Single-pass type I membrane protein .

Expression : Highly expressed in stomach, colon, prostate, trachea and thyroid glands and weakly in bladder and lung.

Products Images



Western Blot analysis of hela cells using primary antibody diluted at 1:1000(4°C overnight). Secondary antibody:Goat Anti-rabbit IgG IRDye 800(diluted at 1:5000, 25°C, 1 hour)