

IL-17D Polyclonal Antibody

Catalog No :	YT6048
Reactivity :	Human
Applications :	IHC;IF;ELISA
Target :	IL-17D
Fields :	>>Cytokine-cytokine receptor interaction;>>C-type lectin receptor signaling pathway;>>JAK-STAT signaling pathway;>>IL-17 signaling pathway
Gene Name :	IL17D IL27 UNQ3096/PRO21175
Protein Name :	Interleukin-17D (IL-17D) (Interleukin-27) (IL-27)
Human Gene Id :	53342
Human Swiss Prot No :	Q8TAD2
Immunogen :	Synthetic peptide from human protein at AA range: 141-190
Specificity :	The antibody detects endogenous IL-17D
Formulation :	Liquid in PBS containing 50% glycerol, 0.5% BSA and 0.02% sodium azide.
Source :	Polyclonal, Rabbit,IgG
Dilution :	IHC 1:50-200, ELISA 1:10000-20000. IF 1:50-200
Purification :	The antibody was affinity-purified from rabbit antiserum by affinity-chromatography using epitope-specific immunogen.
Concentration :	1 mg/ml
Storage Stability :	-15°C to -25°C/1 year(Do not lower than -25°C)
Background :	The protein encoded by this gene is a cytokine that shares the sequence similarity with IL17. The treatment of endothelial cells with this cytokine has been

shown to stimulate the production of other cytokines including IL6, IL8 and CSF2/GM-CSF. The increased expression of IL8 induced by this cytokine was found to be NF-kappa B-dependent. [provided by RefSeq, Jul 2008],

Function :

function:Induces expression of IL-6, IL-8, and GM-CSF from endothelial cells.,online information:Interleukin-17 entry,similarity:Belongs to the IL-17 family.,tissue specificity:Expressed preferentially in adipose, skeletal muscle and CNS.,

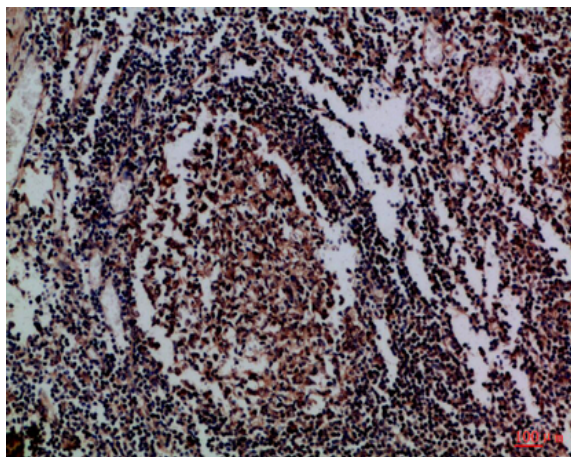
Subcellular Location :

Secreted.

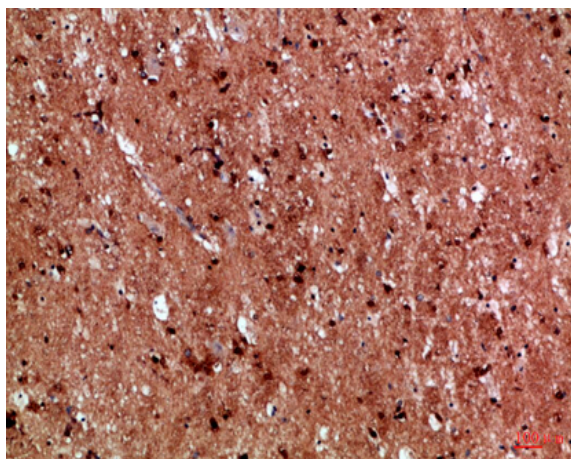
Expression :

Expressed preferentially in adipose, skeletal muscle and CNS.

Products Images



Immunohistochemical analysis of paraffin-embedded Human tonsil, antibody was diluted at 1:100



Immunohistochemical analysis of paraffin-embedded Human brain, antibody was diluted at 1:100