

IL-17F Polyclonal Antibody

Catalog No :	YT6047
Reactivity :	Human;Rat;Mouse;
Applications :	IHC;IF;ELISA
Target :	IL-17F
Fields :	>>Cytokine-cytokine receptor interaction;>>IL-17 signaling pathway;>>Th17 cell differentiation;>>Inflammatory bowel disease
Gene Name :	IL17F IL24
Protein Name :	Interleukin-17F (IL-17F) (Cytokine ML-1) (Interleukin-24) (IL-24)
Human Gene Id :	112744
Human Swiss Prot No :	Q96PD4
Mouse Gene Id :	257630
Mouse Swiss Prot No :	Q7TNI7
Immunogen :	Synthetic peptide from human protein at AA range: 81-130
Specificity :	The antibody detects endogenous IL-17F
Formulation :	Liquid in PBS containing 50% glycerol, 0.5% BSA and 0.02% sodium azide.
Source :	Polyclonal, Rabbit,IgG
Dilution :	IHC 1:50-200, ELISA 1:10000-20000. IF 1:50-200
Purification :	The antibody was affinity-purified from rabbit antiserum by affinity-chromatography using epitope-specific immunogen.
Concentration :	1 mg/ml

Storage Stability : -15°C to -25°C/1 year(Do not lower than -25°C)

Background : The protein encoded by this gene is a cytokine that shares sequence similarity with IL17. This cytokine is expressed by activated T cells, and has been shown to stimulate the production of several other cytokines, including IL6, IL8, and CSF2/GM-CSF. This cytokine is also found to inhibit the angiogenesis of endothelial cells and induce endothelial cells to produce IL2, TGFB1/TGFB, and monocyte chemoattractant protein-1. [provided by RefSeq, Jul 2008],

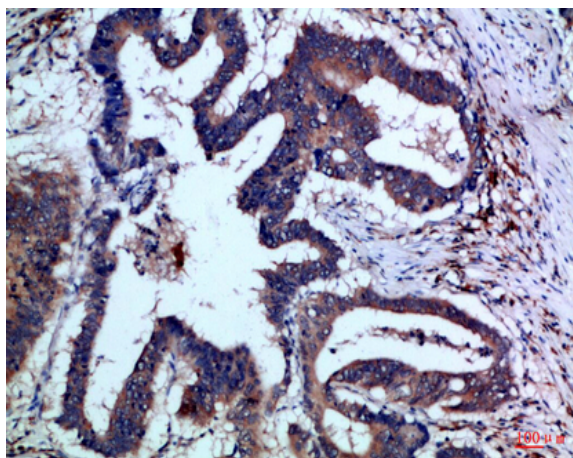
Function : function:Stimulates the production of other cytokines such as IL-6, IL-8 and granulocyte colony-stimulating factor, and can regulate cartilage matrix turnover. Stimulates PBMC and T-cell proliferation. Inhibits angiogenesis.,online information:Interleukin-17 entry,similarity:Belongs to the IL-17 family.,subunit:Homodimer; disulfide-linked.,tissue specificity:Expressed in activated, but not resting, CD4+ T-cells and activated monocytes.,

Subcellular Location : Secreted .

Location :

Expression : Expressed in T-helper 1 and T-helper 2 cells, basophils and mast cells.

Products Images



Immunohistochemical analysis of paraffin-embedded Human-colon-cancer, antibody was diluted at 1:100