

## Epiregulin Polyclonal Antibody

<b>Catalog No :</b>	YT6045
<b>Reactivity :</b>	Human;Mouse;Rat
<b>Applications :</b>	IHC;IF;ELISA
<b>Target :</b>	Epiregulin
<b>Fields :</b>	>>MAPK signaling pathway;>>ErbB signaling pathway;>>PI3K-Akt signaling pathway;>>Colorectal cancer
<b>Gene Name :</b>	EREG
<b>Protein Name :</b>	Proepiregulin [Cleaved into: Epiregulin (EPR)]
<b>Human Gene Id :</b>	2069
<b>Human Swiss Prot No :</b>	O14944
<b>Mouse Gene Id :</b>	13874
<b>Mouse Swiss Prot No :</b>	Q61521
<b>Immunogen :</b>	Synthetic peptide from human protein at AA range: 71-120
<b>Specificity :</b>	The antibody detects endogenous Epiregulin
<b>Formulation :</b>	Liquid in PBS containing 50% glycerol, 0.5% BSA and 0.02% sodium azide.
<b>Source :</b>	Polyclonal, Rabbit,IgG
<b>Dilution :</b>	IHC 1:50-200, ELISA 1:10000-20000. IF 1:50-200
<b>Purification :</b>	The antibody was affinity-purified from rabbit antiserum by affinity-chromatography using epitope-specific immunogen.
<b>Concentration :</b>	1 mg/ml

---

**Storage Stability :** -15°C to -25°C/1 year(Do not lower than -25°C)

---

**Cell Pathway :** ErbB\_HER;

---

**Background :** This gene encodes a secreted peptide hormone and member of the epidermal growth factor (EGF) family of proteins. The encoded protein is a ligand of the epidermal growth factor receptor (EGFR) and the structurally related erb-b2 receptor tyrosine kinase 4 (ERBB4). The encoded protein may be involved in a wide range of biological processes including inflammation, wound healing, oocyte maturation, and cell proliferation. Additionally, the encoded protein may promote the progression of cancers of various human tissues. [provided by RefSeq, Jul 2015],

---

**Function :** function:May be a mediator of localized cell proliferation. As a mitogen it may stimulate cell proliferation and/or angiogenesis.,similarity:Contains 1 EGF-like domain.,tissue specificity:In normal adults, expressed predominantly in the placenta and peripheral blood leukocytes. High levels were detected in carcinomas of the bladder, lung, kidney and colon.,

---

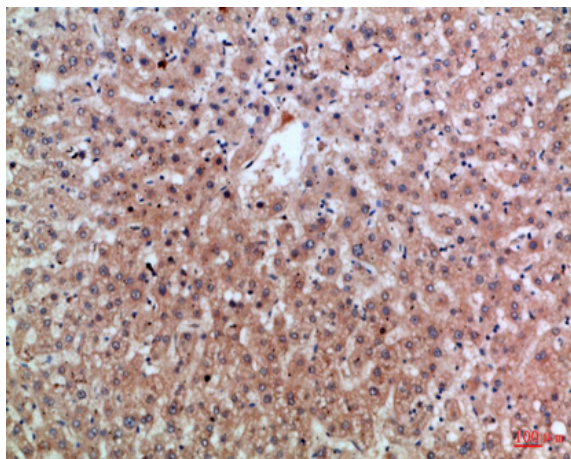
**Subcellular Location :** [Epiregulin]: Secreted, extracellular space .; [Proepiregulin]: Cell membrane ; Single-pass type I membrane protein .

---

**Expression :** In normal adults, expressed predominantly in the placenta and peripheral blood leukocytes. High levels were detected in carcinomas of the bladder, lung, kidney and colon.

---

## Products Images



Immunohistochemical analysis of paraffin-embedded Human-liver, antibody was diluted at 1:100