

CD300a Polyclonal Antibody

Catalog No :	YT6036
Reactivity :	Human;Rat;Mouse;
Applications :	IHC;IF;ELISA
Target :	CD300a
Gene Name :	CD300A CMRF35H IGSF12 HSPC083
Protein Name :	CMRF35-like molecule 8 (CLM-8) (CD300 antigen-like family member A) (CMRF-35-H9) (CMRF35-H9) (CMRF35-H) (IRC1/IRC2) (Immunoglobulin superfamily member 12) (IgSF12) (Inhibitory receptor protein 60) (IR
Human Gene Id :	11314
Human Swiss Prot No :	Q9UGN4
Mouse Gene Id :	217303
Mouse Swiss Prot No :	Q6SJQ0
Immunogen :	Synthetic peptide from human protein at AA range: 141-190
Specificity :	The antibody detects endogenous CD300a
Formulation :	Liquid in PBS containing 50% glycerol, 0.5% BSA and 0.02% sodium azide.
Source :	Polyclonal, Rabbit,IgG
Dilution :	IHC 1:50-200, ELISA 1:10000-20000. IF 1:50-200
Purification :	The antibody was affinity-purified from rabbit antiserum by affinity-chromatography using epitope-specific immunogen.
Concentration :	1 mg/ml
Storage Stability :	-15°C to -25°C/1 year(Do not lower than -25°C)

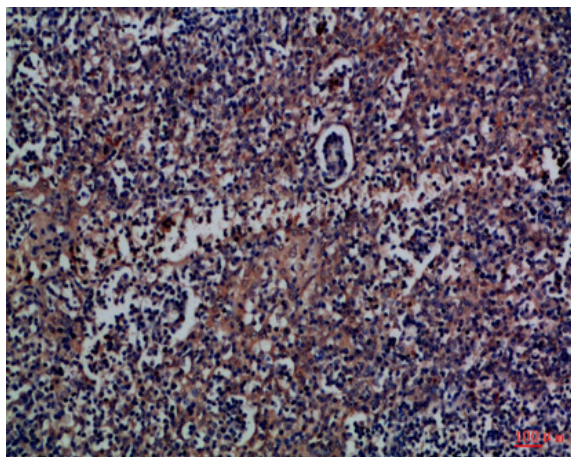
Background : CD300a molecule(CD300A) Homo sapiens This gene encodes a member of the CD300 glycoprotein family of cell surface proteins found on leukocytes involved in immune response signaling pathways. This gene is located on chromosome 17 in a cluster with all but one of the other family members. Multiple transcript variants encoding different isoforms have been found for this gene. [provided by RefSeq, Feb 2012],

Function : function:Inhibitory receptor which may contribute to the down-regulation of cytolytic activity in natural killer (NK) cells, and to the down-regulation of mast cell degranulation.,PTM:Phosphorylated on tyrosine.,similarity:Belongs to the CD300 family.,similarity:Contains 1 Ig-like V-type (immunoglobulin-like) domain.,subunit:Upon tyrosine-phosphorylation, interacts with PTN6/SHP-1 and PTPN11/SHP-2 and INPP5D.,tissue specificity:Expressed not only by natural killer (NK) cells but also by T-cell subsets, B-cells, dendritic cells, mast cells, granulocytes and monocytes.,

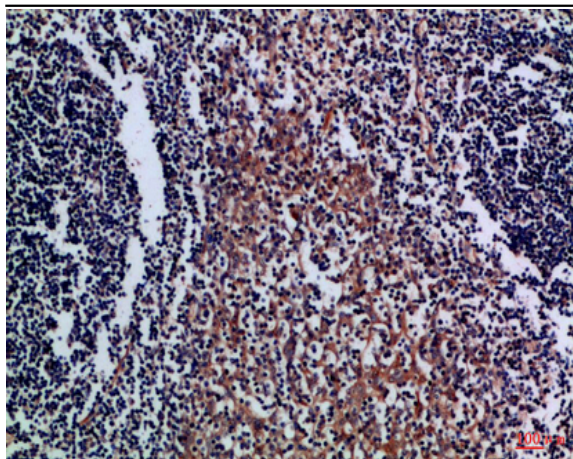
Subcellular Location : Cell membrane ; Single-pass type I membrane protein .

Expression : Expressed not only by natural killer (NK) cells but also by T-cell subsets, B-cells, dendritic cells, mast cells, granulocytes and monocytes.

Products Images



Immunohistochemical analysis of paraffin-embedded Human tonsil, antibody was diluted at 1:100



Immunohistochemical analysis of paraffin-embedded Human-tonsil, antibody was diluted at 1:100