

ETBR Polyclonal Antibody

Catalog No :	YT5786
Reactivity :	Human;Rat;Mouse;
Applications :	WB;IHC;IF;ELISA
Target :	ETBR
Fields :	>>Calcium signaling pathway;>>cGMP-PKG signaling pathway;>>Neuroactive ligand-receptor interaction;>>Melanogenesis;>>Relaxin signaling pathway;>>Pathways in cancer
Gene Name :	EDNRB
Protein Name :	ETBR
Human Gene Id :	1910
Human Swiss Prot No :	P24530
Mouse Gene Id :	13618
Mouse Swiss Prot No :	P48302
Immunogen :	Synthesized peptide derived from ETBR at AA range: 31-80
Specificity :	ETBR Polyclonal Antibody detects endogenous levels of ETBR
Formulation :	Liquid in PBS containing 50% glycerol, 0.5% BSA and 0.02% sodium azide.
Source :	Polyclonal, Rabbit,IgG
Dilution :	IHC: 100-300.WB 1:500-2000, ELISA 1:10000-20000. IF 1:50-200
Purification :	The antibody was affinity-purified from rabbit antiserum by affinity-chromatography using epitope-specific immunogen.
Concentration :	1 mg/ml

Storage Stability : -15°C to -25°C/1 year(Do not lower than -25°C)

Observed Band : 50kD

Cell Pathway : Calcium;Neuroactive ligand-receptor interaction;Melanogenesis;

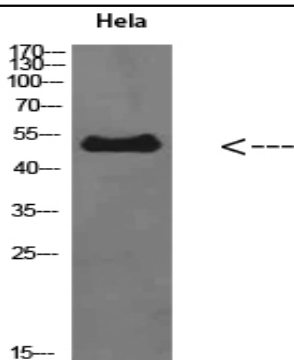
Background : The protein encoded by this gene is a G protein-coupled receptor which activates a phosphatidylinositol-calcium second messenger system. Its ligand, endothelin, consists of a family of three potent vasoactive peptides: ET1, ET2, and ET3. Studies suggest that the multigenic disorder, Hirschsprung disease type 2, is due to mutations in the endothelin receptor type B gene. Alternative splicing and the use of alternative promoters results in multiple transcript variants. [provided by RefSeq, Oct 2016],

Function : disease:Defects in EDNRB are a cause of Waardenburg syndrome type IV (WS4) [MIM:277580]; also known as Waardenburg-Shah syndrome. WS4 is characterized by the association of Waardenburg features (depigmentation and deafness) and the absence of enteric ganglia in the distal part of the intestine (Hirschsprung disease).,disease:Defects in EDNRB are the cause of ABCD syndrome (ABCDS) [MIM:600501]. ABCD syndrome is an autosomal recessive syndrome characterized by albinism, black lock at temporal occipital region, bilateral deafness, aganglionosis of the large intestine and total absence of neurocytes and nerve fibers in the small intestine.,disease:Defects in EDNRB are the cause of Hirschsprung disease type 2 (HSCR2) [MIM:600155]; also known as aganglionic megacolon (MGC). It is a congenital disorder characterized by absence of enteric ganglia along a variable length of the intestine. It is t

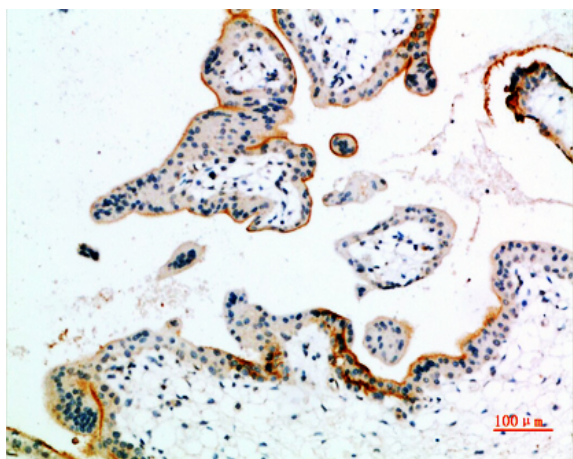
Subcellular Location : Cell membrane ; Multi-pass membrane protein. internalized after activation by endothelins. .

Expression : Expressed in placental stem villi vessels, but not in cultured placental villi smooth muscle cells.

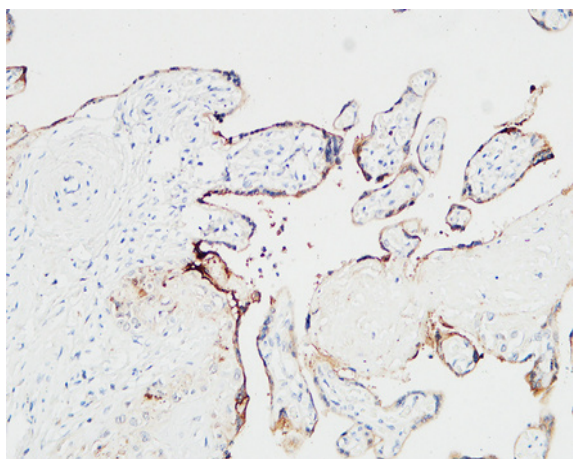
Products Images



Western Blot analysis of HeLa cells using ETBR Polyclonal Antibody diluted at 1:500. Secondary antibody(catalog#:RS0002) was diluted at 1:20000



Immunohistochemical analysis of paraffin-embedded human-placenta, antibody was diluted at 1:200



Immunohistochemical analysis of paraffin-embedded Human placenta. 1, Antibody was diluted at 1:200(4° overnight). 2, High-pressure and temperature EDTA, pH8.0 was used for antigen retrieval. 3,Secondary antibody was diluted at 1:200(room temperature, 30min).