

Napsin A Polyclonal Antibody

Catalog No :	YT5989
Reactivity :	Human;Mouse
Applications :	IHC;IF;ELISA
Target :	Napsin A
Fields :	>>Lysosome
Gene Name :	NAPSA NAP1 NAPA
Protein Name :	Napsin-A (EC 3.4.23.-) (Aspartyl protease 4) (ASP4) (Asp 4) (Napsin-1) (TA01/TA02)
Human Gene Id :	9476
Human Swiss Prot No :	O96009
Mouse Gene Id :	16541
Mouse Swiss Prot No :	O09043
Immunogen :	Synthetic peptide from human protein at AA range: 191-240
Specificity :	The antibody detects endogenous Napsin A
Formulation :	Liquid in PBS containing 50% glycerol, 0.5% BSA and 0.02% sodium azide.
Source :	Polyclonal, Rabbit,IgG
Dilution :	IHC 1:50-200, ELISA 1:10000-20000. IF 1:50-200
Purification :	The antibody was affinity-purified from rabbit antiserum by affinity-chromatography using epitope-specific immunogen.
Concentration :	1 mg/ml

Storage Stability : -15°C to -25°C/1 year(Do not lower than -25°C)

Cell Pathway : Lysosome;

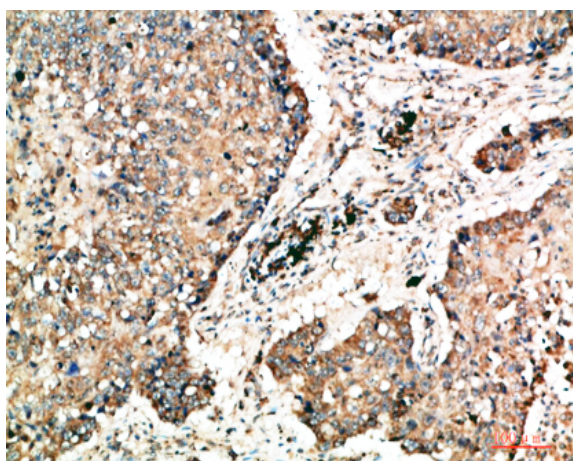
Background : This gene encodes a member of the peptidase A1 family of aspartic proteases. The encoded preproprotein is proteolytically processed to generate an activation peptide and the mature protease. The activation peptides of aspartic proteinases function as inhibitors of the protease active site. These peptide segments, or pro-peptides, are deemed important for correct folding, targeting, and control of the activation of aspartic proteinase zymogens. The encoded protease may play a role in the proteolytic processing of pulmonary surfactant protein B in the lung and may function in protein catabolism in the renal proximal tubules. This gene has been described as a marker for lung adenocarcinoma and renal cell carcinoma. [provided by RefSeq, Feb 2016],

Function : function:May be involved in processing of pneumocyte surfactant precursors.,similarity:Belongs to the peptidase A1 family.,tissue specificity:Expressed predominantly in adult lung (type II pneumocytes) and kidney and in fetal lung. Low levels in adult spleen and very low levels in peripheral blood leukocytes.,

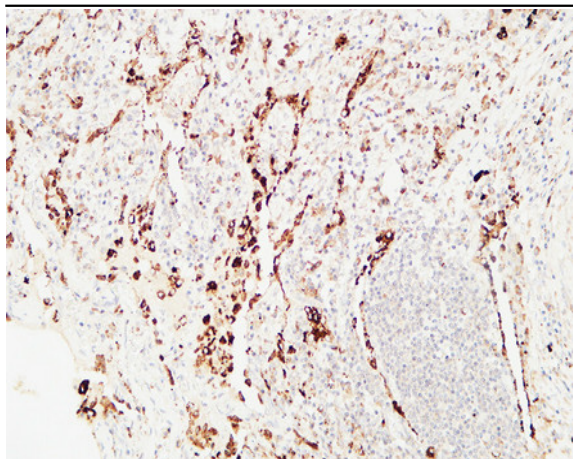
Subcellular Location : Secreted .

Expression : Expressed predominantly in adult lung (type II pneumocytes) and kidney and in fetal lung. Low levels in adult spleen and very low levels in peripheral blood leukocytes.

Products Images



Immunohistochemical analysis of paraffin-embedded human-lung-cancer, antibody was diluted at 1:200



Immunohistochemical analysis of paraffin-embedded Human lung. 1, Antibody was diluted at 1:400(4° overnight). 2, High-pressure and temperature EDTA, pH8.0 was used for antigen retrieval. 3,Secondary antibody was diluted at 1:200(room temperature, 30min).