

DLEU7 Polyclonal Antibody

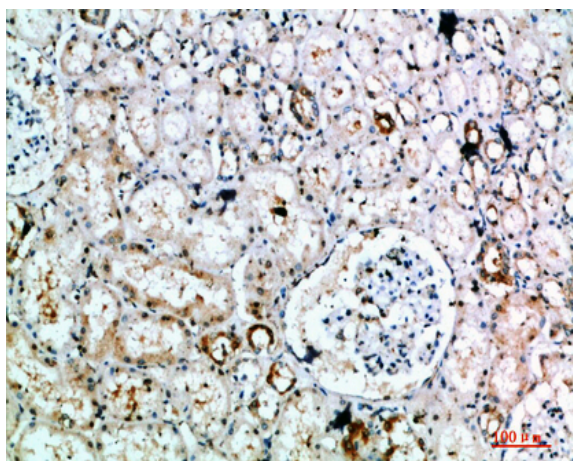
Catalog No :	YT5986
Reactivity :	Human;Mouse
Applications :	IHC;IF;ELISA
Target :	DLEU7
Gene Name :	DLEU7 LEU7
Protein Name :	Leukemia-associated protein 7 (Deleted in lymphocytic leukemia 7)
Human Gene Id :	220107
Human Swiss Prot No :	Q6UYE1
Mouse Gene Id :	239133
Mouse Swiss Prot No :	Q8CHZ8
Immunogen :	The antiserum was produced against synthesized peptide derived from the Internal region of human DLEU7. AA range:51-100
Specificity :	The antibody detects endogenous DLEU7
Formulation :	Liquid in PBS containing 50% glycerol, 0.5% BSA and 0.02% sodium azide.
Source :	Polyclonal, Rabbit,IgG
Dilution :	IHC 1:50-200, ELISA 1:10000-20000. IF 1:50-200
Purification :	The antibody was affinity-purified from rabbit antiserum by affinity-chromatography using epitope-specific immunogen.
Concentration :	1 mg/ml
Storage Stability :	-15°C to -25°C/1 year(Do not lower than -25°C)

Background : alternative products:Additional isoforms seem to exist,developmental stage:Expressed in the fetal brain, liver and kidney.,tissue specificity:Ubiquitous.,

Function : alternative products:Additional isoforms seem to exist,developmental stage:Expressed in the fetal brain, liver and kidney.,tissue specificity:Ubiquitous.,

Expression : Ubiquitous.

Products Images



Immunohistochemical analysis of paraffin-embedded human-kidney, antibody was diluted at 1:200