

Tetranectin Polyclonal Antibody

Catalog No :	YT5984
Reactivity :	Human;Mouse
Applications :	IHC;IF;ELISA
Target :	Tetranectin
Gene Name :	CLEC3B TNA
Protein Name :	Tetranectin (TN) (C-type lectin domain family 3 member B) (Plasminogen kringle 4-binding protein)
Human Gene Id :	7123
Human Swiss Prot No :	P05452
Mouse Swiss Prot No :	P43025
Immunogen :	Synthetic peptide from human protein at AA range: 11-60
Specificity :	The antibody detects endogenous Tetranectin
Formulation :	Liquid in PBS containing 50% glycerol, 0.5% BSA and 0.02% sodium azide.
Source :	Polyclonal, Rabbit,IgG
Dilution :	IHC 1:50-200, ELISA 1:10000-20000. IF 1:50-200
Purification :	The antibody was affinity-purified from rabbit antiserum by affinity-chromatography using epitope-specific immunogen.
Concentration :	1 mg/ml
Storage Stability :	-15°C to -25°C/1 year(Do not lower than -25°C)
Background :	function:Tetranectin binds to plasminogen and to isolated kringle 4. May be involved in the packaging of molecules destined for exocytosis.,mass

spectrometry: PubMed:10614823,online
information:Tetranectin,similarity:Contains 1 C-type lectin
domain.,subunit:Homotrimer.,tissue specificity:Found in plasma.,

Function :

function:Tetranectin binds to plasminogen and to isolated kringle 4. May be
involved in the packaging of molecules destined for exocytosis.,mass
spectrometry: PubMed:10614823,online
information:Tetranectin,similarity:Contains 1 C-type lectin
domain.,subunit:Homotrimer.,tissue specificity:Found in plasma.,

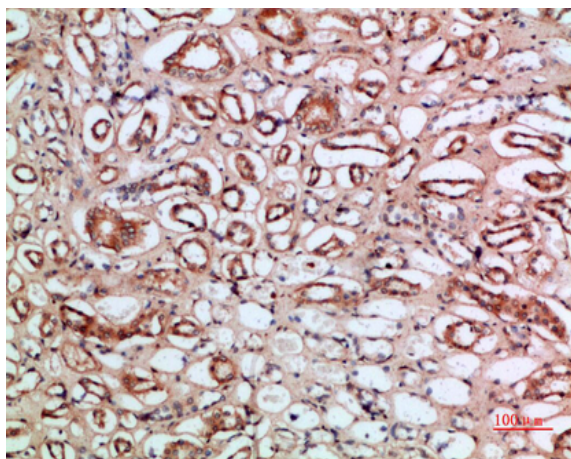
**Subcellular
Location :**

Secreted.

Expression :

Found in plasma.

Products Images



Immunohistochemical analysis of paraffin-embedded human-
kidney, antibody was diluted at 1:200