

HDGF Polyclonal Antibody

Catalog No :	YT5974
Reactivity :	Human;Rat;Mouse;
Applications :	IHC;IF;ELISA
Target :	HDGF
Gene Name :	HDGF HMG1L2
Protein Name :	Hepatoma-derived growth factor (HDGF) (High mobility group protein 1-like 2) (HMG-1L2)
Human Gene Id :	3068
Human Swiss Prot No :	P51858
Mouse Gene Id :	15191
Mouse Swiss Prot No :	P51859
Immunogen :	Synthetic peptide from human protein at AA range: 141-190
Specificity :	The antibody detects endogenous HDGF
Formulation :	Liquid in PBS containing 50% glycerol, 0.5% BSA and 0.02% sodium azide.
Source :	Polyclonal, Rabbit,IgG
Dilution :	IHC 1:50-200, ELISA 1:10000-20000. IF 1:50-200
Purification :	The antibody was affinity-purified from rabbit antiserum by affinity-chromatography using epitope-specific immunogen.
Concentration :	1 mg/ml
Storage Stability :	-15°C to -25°C/1 year(Do not lower than -25°C)

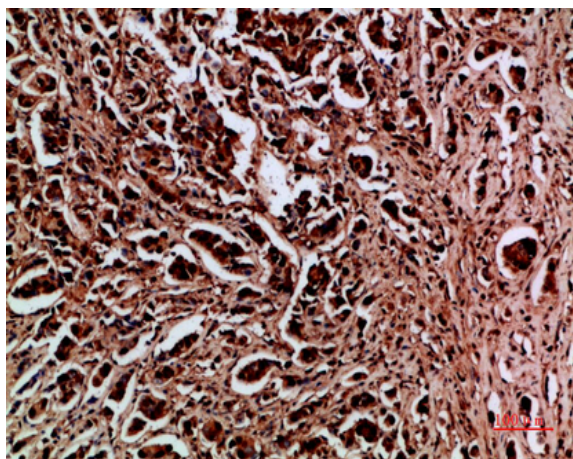
Background : This gene encodes a member of the hepatoma-derived growth factor family. The encoded protein has mitogenic and DNA-binding activity and may play a role in cellular proliferation and differentiation. High levels of expression of this gene enhance the growth of many tumors. This gene was thought initially to be located on chromosome X; however, that location has been determined to correspond to a related pseudogene. Alternatively spliced transcript variants encoding distinct isoforms have been described. [provided by RefSeq, Jan 2016],

Function : domain:The PWWP domain harbors the heparin-binding sites and is responsible for DNA-binding, while the C-terminal region is essentially unstructured.,function:Heparin-binding protein, with mitogenic activity for fibroblasts. Acts as a transcriptional repressor.,PTM:Sumoylated by SUMO1. Sumoylation prevents binding to chromatin.,similarity:Belongs to the HDGF family.,similarity:Contains 1 PWWP domain.,subunit:Monomer, and domain-swapped homodimer.,tissue specificity:Ubiquitous.,

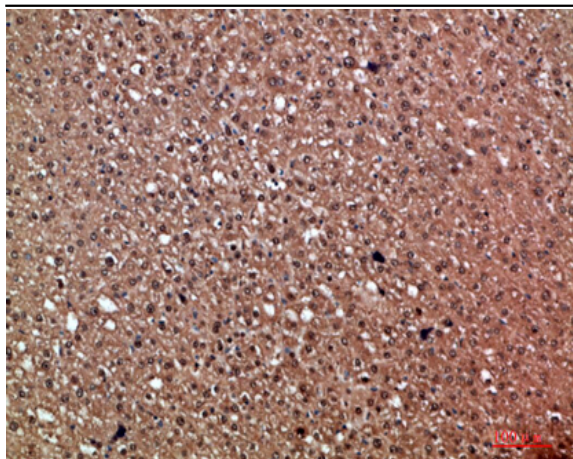
Subcellular Location : [Isoform 1]: Nucleus . Cytoplasm . Secreted, extracellular exosome . Secreted by exosomes and is located inside the exosome (PubMed:27926477). May also be secreted as free protein via an as yet unknown pathway (PubMed:27926477). . ; [Isoform 2]: Nucleus . Cytoplasm . Secreted, extracellular exosome . Secreted by exosomes and is located on the outer exosome surface. . ; [Isoform 3]: Nucleus . Cytoplasm . Secreted, extracellular exosome . Secreted by exosomes and is located on the outer exosome surface. .

Expression : Ubiquitous.

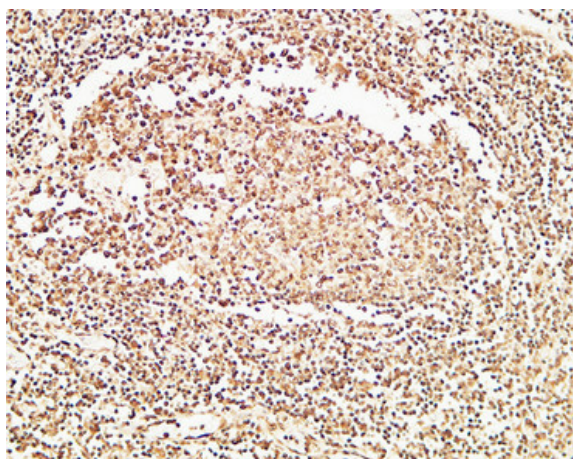
Products Images



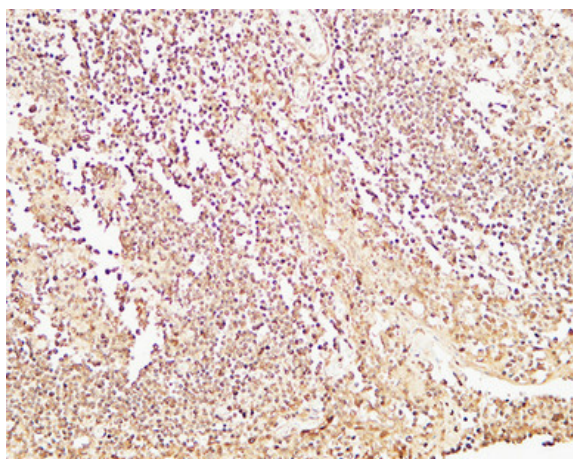
Immunohistochemical analysis of paraffin-embedded human-breast-cancer, antibody was diluted at 1:200



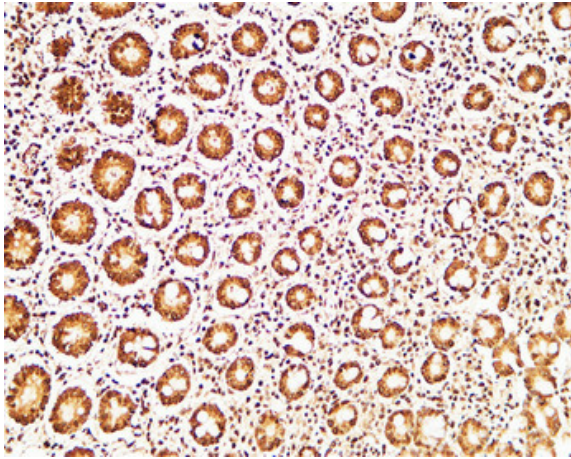
Immunohistochemical analysis of paraffin-embedded human-liver-cancer, antibody was diluted at 1:200



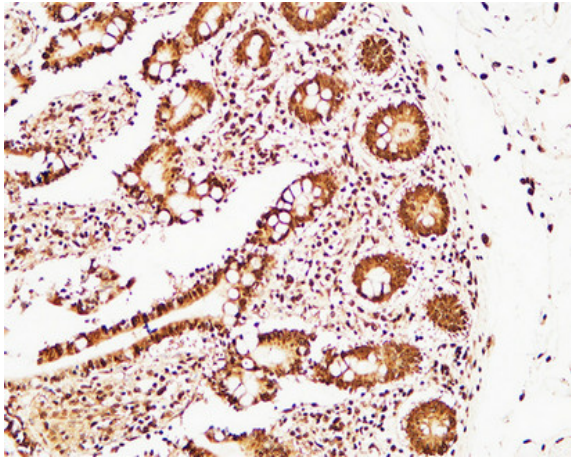
Immunohistochemical analysis of paraffin-embedded Human Amygdala. 1, Antibody was diluted at 1:200(4° overnight). 2, High-pressure and temperature EDTA, pH8.0 was used for antigen retrieval. 3,Secondary antibody was diluted at 1:200(room temperature, 30min).



Immunohistochemical analysis of paraffin-embedded Human Amygdala. 1, Antibody was diluted at 1:200(4° overnight). 2, High-pressure and temperature EDTA, pH8.0 was used for antigen retrieval. 3,Secondary antibody was diluted at 1:200(room temperature, 30min).



Immunohistochemical analysis of paraffin-embedded Human colon. 1, Antibody was diluted at 1:200(4° overnight). 2, High-pressure and temperature EDTA, pH8.0 was used for antigen retrieval. 3,Secondary antibody was diluted at 1:200(room temperature, 30min).



Immunohistochemical analysis of paraffin-embedded Human colon. 1, Antibody was diluted at 1:200(4° overnight). 2, High-pressure and temperature EDTA, pH8.0 was used for antigen retrieval. 3,Secondary antibody was diluted at 1:200(room temperature, 30min).