

## IL-26 Polyclonal Antibody

<b>Catalog No :</b>	YT5723
<b>Reactivity :</b>	Human
<b>Applications :</b>	WB;ELISA
<b>Target :</b>	IL-26
<b>Fields :</b>	>>Cytokine-cytokine receptor interaction
<b>Gene Name :</b>	IL26
<b>Protein Name :</b>	Interleukin-26
<b>Human Gene Id :</b>	55801
<b>Human Swiss Prot No :</b>	Q9NPH9
<b>Immunogen :</b>	Synthesized peptide derived from Interleukin-26 at AA range: 21-70
<b>Specificity :</b>	IL-26 Polyclonal Antibody detects endogenous levels of IL-26 protein.
<b>Formulation :</b>	Liquid in PBS containing 50% glycerol, 0.5% BSA and 0.02% sodium azide.
<b>Source :</b>	Polyclonal, Rabbit,IgG
<b>Dilution :</b>	WB 1:500 - 1:2000. ELISA: 1:10000. Not yet tested in other applications.
<b>Purification :</b>	The antibody was affinity-purified from rabbit antiserum by affinity-chromatography using epitope-specific immunogen.
<b>Concentration :</b>	1 mg/ml
<b>Storage Stability :</b>	-15°C to -25°C/1 year(Do not lower than -25°C)
<b>Observed Band :</b>	25kD

**Cell Pathway :** Cytokine-cytokine receptor interaction;Jak\_STAT;

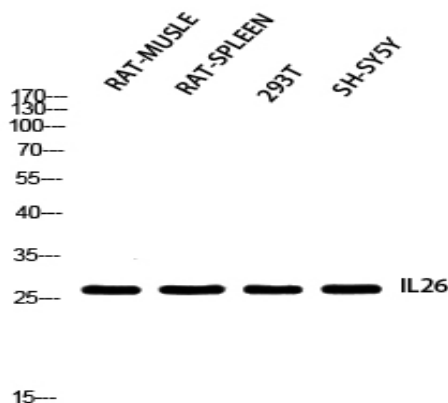
**Background :** This gene was identified by its overexpression specifically in herpesvirus samimiri-transformed T cells. The encoded protein is a member of the IL10 family of cytokines. It is a secreted protein and may function as a homodimer. This protein is thought to contribute to the transformed phenotype of T cells after infection by herpesvirus samimiri. [provided by RefSeq, Jul 2008],

**Function :** induction:By Herpesvirus saimiri infection.,online information:Interleukin-26 entry,similarity:Belongs to the IL-10 family.,subunit:Homodimer.,tissue specificity:Expressed in HVS transformed T-cells but not other T-cell lines or primary stimulated T-cells.,

**Subcellular Location :** Secreted .

**Expression :** Expressed in HVS transformed T-cells but not other T-cell lines or primary stimulated T-cells. Expressed in colonic T-cells including Th17 inflammatory T-cells; the expression is significantly increased in serum of patients with Crohn's disease (at protein level).

## Products Images



Western blot analysis of RAT-MUSCLE RAT-SPLEEN 293T SH-SY5Y using IL26 antibody. Antibody was diluted at 1:2000. Secondary antibody(catalog#:RS0002) was diluted at 1:20000