

## CDNF Polyclonal Antibody

<b>Catalog No :</b>	YT5969
<b>Reactivity :</b>	Human;Rat;Mouse;
<b>Applications :</b>	IHC;IF;ELISA
<b>Target :</b>	CDNF
<b>Gene Name :</b>	CDNF ARMETL1
<b>Protein Name :</b>	Cerebral dopamine neurotrophic factor (ARMET-like protein 1) (Conserved dopamine neurotrophic factor)
<b>Human Gene Id :</b>	441549
<b>Human Swiss Prot No :</b>	Q49AH0
<b>Mouse Gene Id :</b>	227526
<b>Mouse Swiss Prot No :</b>	Q8CC36
<b>Immunogen :</b>	Synthetic peptide from human protein at AA range: 31-80
<b>Specificity :</b>	The antibody detects endogenous CDNF
<b>Formulation :</b>	Liquid in PBS containing 50% glycerol, 0.5% BSA and 0.02% sodium azide.
<b>Source :</b>	Polyclonal, Rabbit,IgG
<b>Dilution :</b>	IHC 1:50-200, ELISA 1:10000-20000. IF 1:50-200
<b>Purification :</b>	The antibody was affinity-purified from rabbit antiserum by affinity-chromatography using epitope-specific immunogen.
<b>Concentration :</b>	1 mg/ml
<b>Storage Stability :</b>	-15°C to -25°C/1 year(Do not lower than -25°C)

**Background :** CDNF (Cerebral Dopamine Neurotrophic Factor) is a Protein Coding gene. Trophic factor for dopamine neurons. Prevents the 6-hydroxydopamine (6-OHDA)-induced degeneration of dopaminergic neurons. When administered after 6-OHDA-lesioning, restores the dopaminergic function and prevents the degeneration of dopaminergic neurons in substantia nigra (By similarity).

---

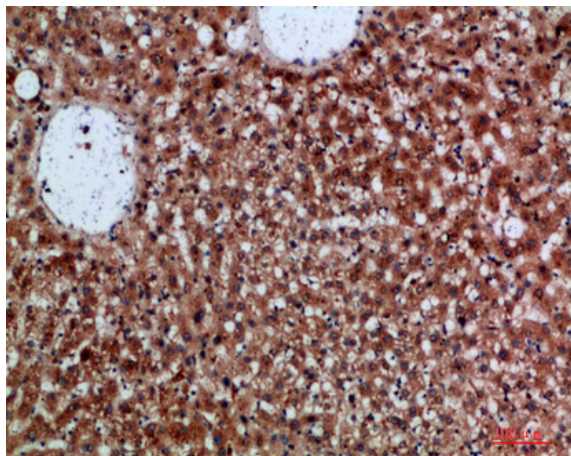
**Subcellular Location :** Secreted .

---

**Expression :** Widely expressed in neuronal and non-neuronal tissues. In the brain, highest levels in the optic nerve and corpus callosum.

---

## Products Images



Immunohistochemical analysis of paraffin-embedded human-liver, antibody was diluted at 1:200