

## GMF- $\gamma$ Polyclonal Antibody

<b>Catalog No :</b>	YT5968
<b>Reactivity :</b>	Human;Rat;Mouse;
<b>Applications :</b>	IHC;IF;ELISA
<b>Target :</b>	GMF- $\gamma$
<b>Gene Name :</b>	GMFG
<b>Protein Name :</b>	Glia maturation factor gamma (GMF-gamma)
<b>Human Gene Id :</b>	9535
<b>Human Swiss Prot No :</b>	O60234
<b>Mouse Gene Id :</b>	63986
<b>Mouse Swiss Prot No :</b>	Q9ERL7
<b>Immunogen :</b>	Synthetic peptide from human protein at AA range: 1-50
<b>Specificity :</b>	The antibody detects endogenous GMF- $\gamma$
<b>Formulation :</b>	Liquid in PBS containing 50% glycerol, 0.5% BSA and 0.02% sodium azide.
<b>Source :</b>	Polyclonal, Rabbit,IgG
<b>Dilution :</b>	IHC 1:50-200, ELISA 1:10000-20000. IF 1:50-200
<b>Purification :</b>	The antibody was affinity-purified from rabbit antiserum by affinity-chromatography using epitope-specific immunogen.
<b>Concentration :</b>	1 mg/ml
<b>Storage Stability :</b>	-15°C to -25°C/1 year(Do not lower than -25°C)

**Background :** similarity:Belongs to the actin-binding proteins ADF family. GMF subfamily.,similarity:Contains 1 ADF-H domain.,tissue specificity:Expressed predominantly in lung, heart and placenta.,

---

**Function :** similarity:Belongs to the actin-binding proteins ADF family. GMF subfamily.,similarity:Contains 1 ADF-H domain.,tissue specificity:Expressed predominantly in lung, heart and placenta.,

---

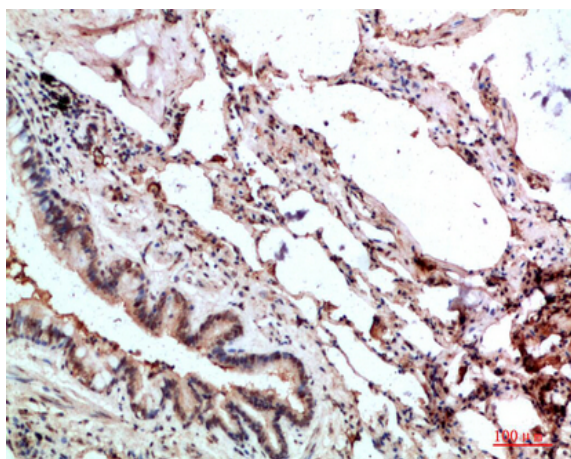
**Subcellular Location :** intracellular,

---

**Expression :** Expressed predominantly in lung, heart and placenta.

---

## Products Images



Immunohistochemical analysis of paraffin-embedded human-lung, antibody was diluted at 1:200