

## CD306 Polyclonal Antibody

<b>Catalog No :</b>	YT5718
<b>Reactivity :</b>	Human
<b>Applications :</b>	WB;ELISA
<b>Target :</b>	CD306
<b>Gene Name :</b>	LAIR2
<b>Protein Name :</b>	Leukocyte-associated immunoglobulin-like receptor 2
<b>Human Gene Id :</b>	3904
<b>Human Swiss Prot No :</b>	Q6ISS4
<b>Immunogen :</b>	The antiserum was produced against synthesized peptide derived from the Internal region of human LAIR2. AA range:21-70
<b>Specificity :</b>	CD306 Polyclonal Antibody detects endogenous levels of CD306 protein.
<b>Formulation :</b>	Liquid in PBS containing 50% glycerol, 0.5% BSA and 0.02% sodium azide.
<b>Source :</b>	Polyclonal, Rabbit,IgG
<b>Dilution :</b>	WB 1:500 - 1:2000. ELISA: 1:10000. Not yet tested in other applications.
<b>Purification :</b>	The antibody was affinity-purified from rabbit antiserum by affinity-chromatography using epitope-specific immunogen.
<b>Concentration :</b>	1 mg/ml
<b>Storage Stability :</b>	-15°C to -25°C/1 year(Do not lower than -25°C)
<b>Observed Band :</b>	20kD
<b>Background :</b>	The protein encoded by this gene is a member of the immunoglobulin superfamily. It was identified by its similarity to leukocyte-associated

immunoglobulin-like receptor 1, a membrane-bound receptor that modulates innate immune response. The protein encoded by this locus is a soluble receptor that may play roles in both inhibition of collagen-induced platelet aggregation and vessel formation during placental implantation. This gene maps to a region of 19q13.4, termed the leukocyte receptor cluster, which contains 29 genes in the immunoglobulin superfamily. Alternatively spliced transcript variants have been described for this gene. [provided by RefSeq, Sep 2013],

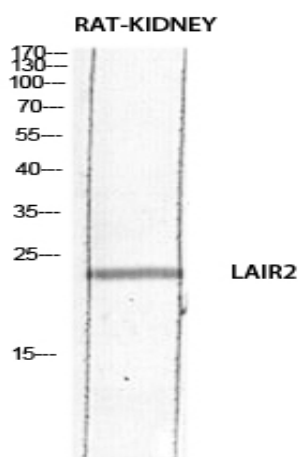
**Function :**

alternative products:Named isoforms=2,similarity:Contains 1 Ig-like C2-type (immunoglobulin-like) domain.,

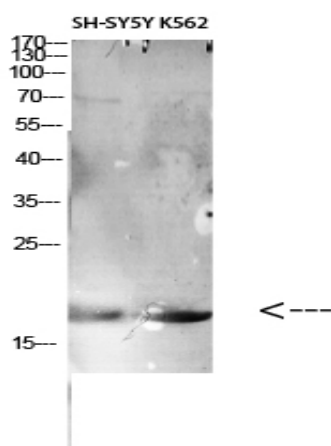
**Subcellular Location :**

Secreted.

## Products Images



Western blot analysis of RAT-KIDNEY lysis using LAIR2 antibody. Antibody was diluted at 1:1000. Secondary antibody(catalog#:RS0002) was diluted at 1:20000



Western Blot analysis of various cells using Antibody diluted at 1:1000. Secondary antibody(catalog#:RS0002) was diluted at 1:20000