

Dectin-2 Polyclonal Antibody

| | |
|------------------------------|---|
| Catalog No : | YT5685 |
| Reactivity : | Human;Rat;Mouse; |
| Applications : | WB;IHC;IF;ELISA |
| Target : | Dectin-2 |
| Fields : | >>C-type lectin receptor signaling pathway |
| Gene Name : | CLEC6A |
| Protein Name : | C-type lectin domain family 6 member A |
| Human Gene Id : | 93978 |
| Human Swiss Prot No : | Q6EIG7 |
| Mouse Swiss Prot No : | Q9JKF4 |
| Immunogen : | Synthesized peptide derived from the Internal region of human Dectin-2. |
| Specificity : | Dectin-2 Polyclonal Antibody detects endogenous levels of Dectin-2 protein. |
| Formulation : | Liquid in PBS containing 50% glycerol, 0.5% BSA and 0.02% sodium azide. |
| Source : | Polyclonal, Rabbit,IgG |
| Dilution : | WB 1:500 - 1:2000. IHC: 1:100-1:300. ELISA: 1:10000.. IF 1:50-200 |
| Purification : | The antibody was affinity-purified from rabbit antiserum by affinity-chromatography using epitope-specific immunogen. |
| Concentration : | 1 mg/ml |
| Storage Stability : | -15°C to -25°C/1 year(Do not lower than -25°C) |

Observed Band : 23kD

Background :

The protein encoded by this gene is a type II membrane receptor with an extracellular C-type lectin-like domain fold. The extracellular portion binds structures with a high mannose content and has been shown to recognize several pathogens, including *C. elegans*, *S. cerevisiae*, *M. tuberculosis*, *C. neoformans*, and house dust mite. When stimulated, the encoded protein initiates signalling through the CARD9-Bcl10-Malt1 pathway, leading to the induction of cytokines. Two transcript variants encoding different isoforms have been found for this gene. [provided by RefSeq, Dec 2015],

Function :

function:May be involved in regulating immune reactivity.,similarity:Contains 1 C-type lectin domain.,tissue specificity:Expressed in dendritic cells.,

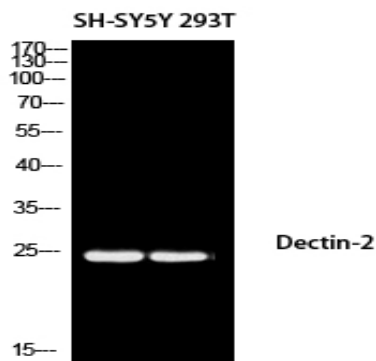
Subcellular Location :

Cell membrane ; Single-pass type II membrane protein .

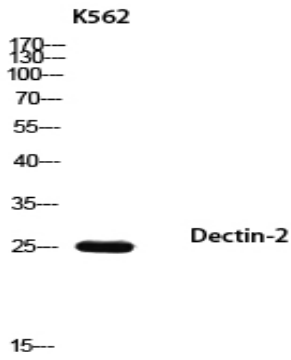
Expression :

Expressed in lung, spleen, lymph node, leukocytes, bone marrow, tonsils and dendritic cells. Strongly expressed in purified monocytes and weakly in B-cells. In peripheral blood cells, preferentially expressed in plasmacytoids rather than myeloids.

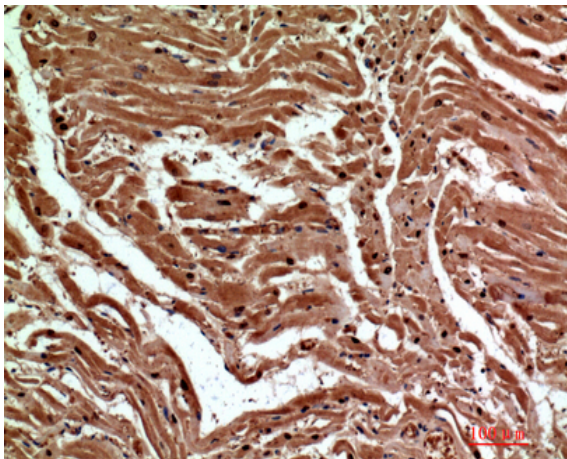
Products Images



Western blot analysis of SH-SY5Y 293T using Dectin-2 antibody. Antibody was diluted at 1:1000. Secondary antibody(catalog#:RS0002) was diluted at 1:20000



Western blot analysis of K562 using Dectin-2 antibody. Antibody was diluted at 1:1000. Secondary antibody(catalog#:RS0002) was diluted at 1:20000



Immunohistochemical analysis of paraffin-embedded human-heart, antibody was diluted at 1:200