

Endoglycan Polyclonal Antibody

Catalog No :	YT5684
Reactivity :	Human;Mouse
Applications :	WB;ELISA
Target :	Endoglycan
Gene Name :	PODXL2
Protein Name :	Podocalyxin-like protein 2
Human Gene Id :	50512
Human Swiss Prot No :	Q9NZ53
Mouse Swiss Prot No :	Q8CAE9
Immunogen :	Synthesized peptide derived from the Internal region of human Endoglycan.
Specificity :	Endoglycan Polyclonal Antibody detects endogenous levels of Endoglycan protein.
Formulation :	Liquid in PBS containing 50% glycerol, 0.5% BSA and 0.02% sodium azide.
Source :	Polyclonal, Rabbit,IgG
Dilution :	WB 1:500 - 1:2000. ELISA: 1:10000. Not yet tested in other applications.
Purification :	The antibody was affinity-purified from rabbit antiserum by affinity-chromatography using epitope-specific immunogen.
Concentration :	1 mg/ml
Storage Stability :	-15°C to -25°C/1 year(Do not lower than -25°C)
Observed Band :	65kD

Background :

This gene is a member of the CD34 family of cell surface transmembrane proteins, which are characterized by an N-terminal extracellular mucin domain, globular and stalk domains, a single pass transmembrane region, and a charged cytoplasmic tail. The encoded protein is a ligand for vascular selectins. [provided by RefSeq, Oct 2012],

Function :

PTM:Glycosylated; contains chondroitin sulfate. Displays sialylated O-linked oligosaccharides.,PTM:Sulfation and sialylated O-linked oligosaccharides are necessary for SELL/L-selectin binding.,similarity:Belongs to the podocalyxin family.,subunit:Homodimer; disulfide-linked. Binds to SELL/L-selectin.,tissue specificity:Highly expressed in brain. Moderately expressed in pancreas, kidney and lymphoid node. Weakly expressed in liver. Detected in both endothelial cells and CD34+ bone marrow cells.,

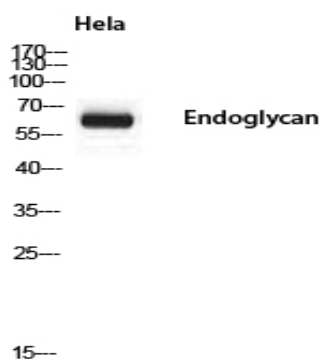
Subcellular Location :

Membrane ; Single-pass type I membrane protein .

Expression :

Expressed in T-cells, B-cells and monocytes. Expression is higher on memory and germinal center cells than on naive B-cells (at protein level). Highly expressed in brain. Moderately expressed in pancreas, kidney and lymphoid node. Weakly expressed in liver. Detected in both endothelial cells and CD34+ bone marrow cells.

Products Images



Western blot analysis of HeLa using Endoglycan antibody.
Secondary antibody(catalog#:RS0002) was diluted at 1:20000